



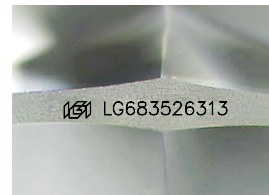
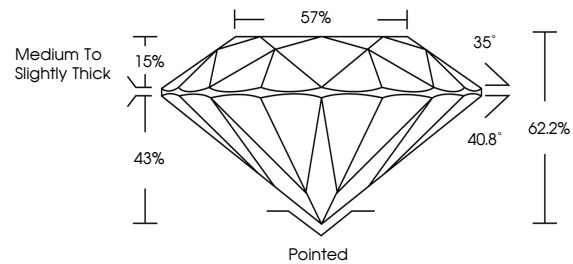
**INTERNATIONAL
GEMOLOGICAL
INSTITUTE**

ELECTRONIC COPY

LABORATORY GROWN DIAMOND REPORT

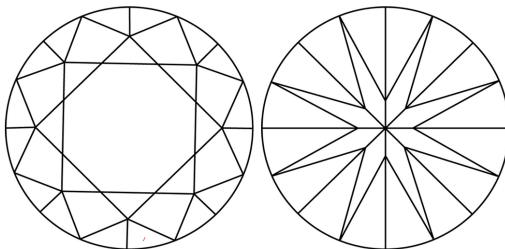
LG683526313
Report verification at igi.org

PROPORTIONS



Sample Image Used

CLARITY CHARACTERISTICS



KEY TO SYMBOLS

Red symbols indicate internal characteristics.
Green symbols indicate external characteristics.

COLOR

D E F G H I J Faint Very Light Light

CLARITY

IF WS¹⁻² VS¹⁻² SI¹⁻² |¹⁻³

Internally Flawless	Very Very Slightly Included	Very Slightly Included	Slightly Included	Included
------------------------	--------------------------------	---------------------------	----------------------	----------



© IGI 2020, International Gemological Institute

FD - 10 20

www.igi.org

LABORATORY GROWN DIAMOND REPORT



February 21, 2025

IGI Report Number **LG683526313**

Description	LABORATORY GROWN DIAMOND
-------------	--------------------------

Shape and Cutting Style **ROUND BRILLIANT**

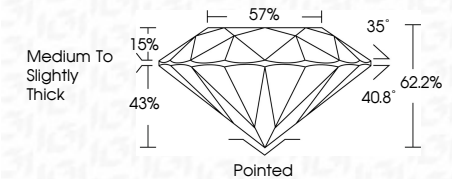
Measurements	8.03 - 8.04 X 5.00 MM
--------------	-----------------------

GRADING RESULTS

Carat Weight **2.00 CARATS**

Color Grade **E**Clarity Grade **VVS 2**

Cut Grade **IDEAL**



ADDITIONAL GRADING INFORMATION

Polish **EXCELLENT**Symmetry **EXCELLENT**Fluorescence **NONE**Inscription(s) LG683526313

Comments: This Laboratory Grown Diamond was created by Chemical Vapor Deposition (CVD) growth process.
Type IIa



IGI

February 21, 2025					
GIGI Report No LGAS952313					
ROUND BRILLANT					
		8.00 - 8.04 X 5.00 MM		2.00 CARATS	
Carat Weight	Color Grade	Clarity Grade	Cut Grade	Depth	E
				62.2%	VVS 2
			Table	57%	IDEAL
			Grades	Medium to Slightly Thick	
Culet	Polish	Symmetry	Fluorescence	Painted	
		Inscriptions(s)		EXCELLENT	
				EXCELLENT	
				NONE	
				(#) LGAS952313	
Comments:					
This Laboratory Grown Diamond was created by Chemical Vapor Deposition (CVD) growth process.					
Type IId					