



**ELECTRONIC COPY**

## LABORATORY GROWN DIAMOND REPORT

February 17, 2025	
IGI Report Number	LG683593435
Description	LABORATORY GROWN DIAMOND
Shape and Cutting Style	ROUND BRILLIANT
Measurements	7.44 - 7.50 X 4.62 MM

## GRADING RESULTS

Carat Weight	1.58 CARAT
Color Grade	D
Clarity Grade	VVS 2
Cut Grade	IDEAL

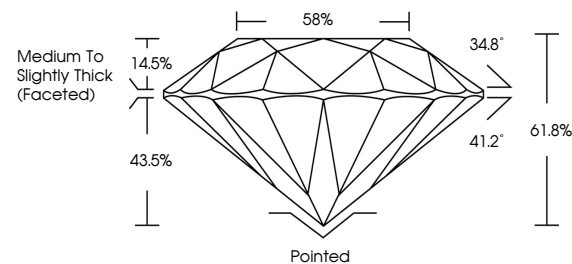
### ADDITIONAL GRADING INFORMATION

Polish	EXCELLENT
Symmetry	EXCELLENT
Fluorescence	NONE
Inscription(s)	 LG683593435

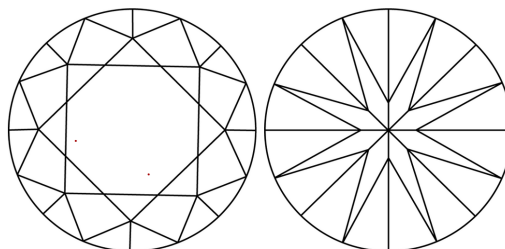
Comments: This Laboratory Grown Diamond was created by Chemical Vapor Deposition (CVD) growth process.  
Type IIa

LG683593435  
Report verification at [igi.org](https://igi.org)

## PROPORTIONS

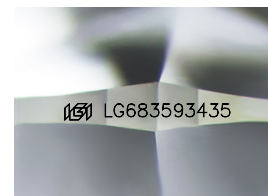


## CLARITY CHARACTERISTICS



## KEY TO SYMBOLS

Red symbols indicate internal characteristics.  
Green symbols indicate external characteristics.



Sample Image Used

**COLOR**

D E F G H I J Faint Very Light Light

## CLARITY

IF WS<sup>1-2</sup> VS<sup>1-2</sup> SI<sup>1-2</sup> |<sup>1-3</sup>

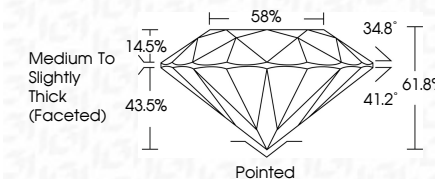
Internally Flawless	Very Very Slightly Included	Very Slightly Included	Slightly Included	Included
------------------------	--------------------------------	---------------------------	----------------------	----------



February 17, 2025	
IGI Report Number	LG683593435
Description	LABORATORY GROWN DIAMOND
Shape and Cutting Style	ROUND BRILLIANT
Measurements	7.44 - 7.50 X 4.62 MM

## GRADING RESULTS

Carat Weight	1.58 CARAT
Color Grade	D
Clarity Grade	VVS 2
Cut Grade	IDEAL



### ADDITIONAL GRADING INFORMATION

Polish	EXCELLENT
Symmetry	EXCELLENT
Fluorescence	NONE
Inscription(s)	 LG683593435
<p>Comments: This Laboratory Grown Diamond was created by Chemical Vapor Deposition (CVD) growth process.</p> <p>Type IIa</p>	



© IGI 2020, International Gemological Institute

FD - 10 20



THIS DOCUMENT WAS PRODUCED WITH THE FOLLOWING SECURITY MEASURES: SPECIAL DOCUMENT PAPER, INK SCREENS, WATERMARK, BACKGROUND DESIGNS, HOLOGRAM AND OTHER SECURITY FEATURES NOT LISTED AND DO EXCEED DOCUMENT SECURITY INDUSTRY GUIDELINE

**www.igi.org**

February 17, 2025	1.58 CARAT
IGI Report No. LG58593465	
ROUND BRILLIANT	
44 x 44 x 4.62 MM	
Color Weight	D
Color Grade	VVS 2
Clarity Grade	IDEAL
Cut Grade	61.8%
Depth	59%
Table	Medium to Slightly Thick (Faceted)
Girdle	Polished
Culet	EXCELLENT
Polish	EXCELLENT
Symmetry	NONE
Fluorescence	IGI LG58593465
Inscriptions(s)	
<b>Comments:</b> This is a Chemically Grown Diamond was identified by Chemical Vapor Deposition (CVD) growth process. Type IIa	