

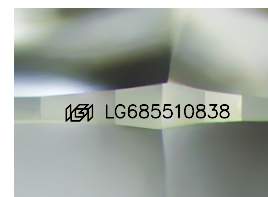
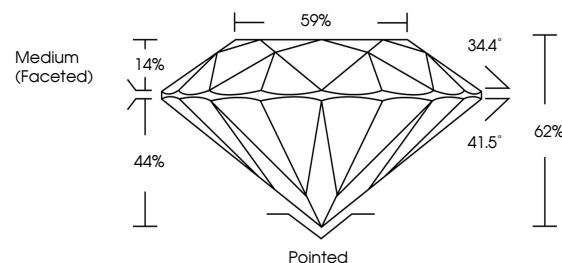


**ELECTRONIC COPY**

## LABORATORY GROWN DIAMOND REPORT

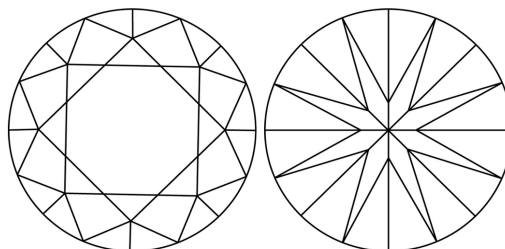
LG685510838  
Report verification at [igi.org](https://igi.org)

## PROPORTIONS



Sample Image Used

## CLARITY CHARACTERISTICS



### KEY TO SYMBOLS

Red symbols indicate internal characteristics.  
Green symbols indicate external characteristics.

## COLOR

D E F G H I J Faint Very Light Light

## CLARITY

IF      WS<sup>1-2</sup>      VS<sup>1-2</sup>      S<sup>1-2</sup>      |<sup>1-3</sup>

Internally Flawless	Very Very Slightly Included	Very Slightly Included	Slightly Included	Included
------------------------	--------------------------------	---------------------------	----------------------	----------



© IGI 2020, International Gemological Institute

FD - 10 20

**www.igi.org**

## LABORATORY GROWN DIAMOND REPORT



March 11, 2025

IGI Report Number **LG685510838**Description **LABORATORY GROWN DIAMOND**Shape and Cutting Style **ROUND BRILLIANT**

Measurements 6.84 - 6.89 X 4.26 MM

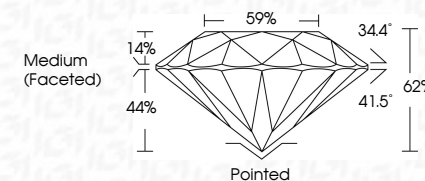
## GRADING RESULTS

Carat Weight 1.23 CARAT

Color Grade D

Clarity Grade **INTERNALLY FLAWLESS**

Cut Grade **IDEAL**



### ADDITIONAL GRADING INFORMATION

Polish **EXCELLENT**Symmetry **EXCELLENT**Fluorescence **NONE**Inscription(s)  LG685510838

Comments: As Grown - No indication of post-growth treatment.

This Laboratory Grown Diamond was created by High Pressure High Temperature (HPHT) growth process.

Type II



<b>March 11, 2026</b>	<b>GJ Report No LG98510838</b>	
<b>ROUND BRILLIANT</b>		
<b>1.23 CARAT</b>	<b>D</b>	<b>IF</b>
<b>Color Grade</b>	<b>Clarity Grade</b>	<b>IDeal</b>
<b>Cut Weight</b>	<b>Cut Grade</b>	<b>62%</b>
<b>1.64 - 1.69 X 4.26 MM</b>	<b>Depth</b>	<b>59%</b>
	<b>Table</b>	<b>Medium (Faceted)</b>
	<b>Girdle</b>	
	<b>Culet</b>	<b>Poished</b>
	<b>Polish</b>	<b>EXCELLENT</b>
	<b>Symmetry</b>	<b>EXCELLENT</b>
	<b>Fluorescence</b>	<b>NONE</b>
	<b>Inscriptions(s)</b>	<b>lgjLG98510838</b>
<b>Comments:</b>		
No Growth - No indication of post-growth This Laboratory Grown Diamond was created by High Pressure High temperature (HPHT) growth process. Type II		