



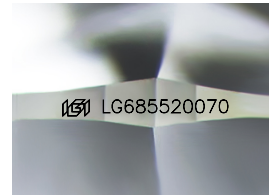
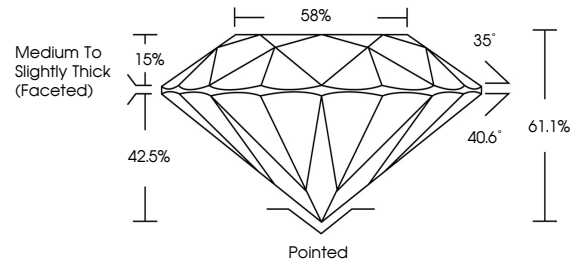
**INTERNATIONAL  
GEMOLOGICAL  
INSTITUTE**

**ELECTRONIC COPY**

## LABORATORY GROWN DIAMOND REPORT

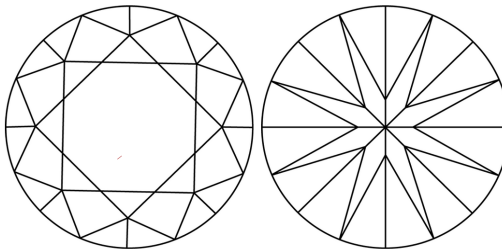
LG685520070  
Report verification at [igi.org](https://igi.org)

## PROPORTIONS



Sample Image Used

## CLARITY CHARACTERISTICS



## KEY TO SYMBOLS

Red symbols indicate internal characteristics.  
Green symbols indicate external characteristics.

## COLOR

D E F G H I J Faint Very Light Light

## CLARITY

IF      WS<sup>1-2</sup>      VS<sup>1-2</sup>      SI<sup>1-2</sup>      I<sup>1-3</sup>

Internally Flawless	Very Very Slightly Included	Very Slightly Included	Slightly Included	Included
------------------------	--------------------------------	---------------------------	----------------------	----------



© IGI 2020, International Gemological Institute

FD - 10 20

**www.igi.org**

LABORATORY GROWN DIAMOND REPORT



March 22, 2025

IGI Report Number **LG685520070**

Description	LABORATORY GROWN DIAMOND
-------------	--------------------------

Shape and Cutting Style **ROUND BRILLIANT**

Measurements	7.41 - 7.48 X 4.54 MM
--------------	-----------------------

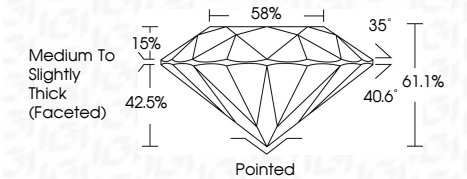
## GRADING RESULTS

Carat Weight **1.55 CARAT**

Color Grade **D**

Clarity Grade **VVS 1**

Cut Grade **IDEAL**



### ADDITIONAL GRADING INFORMATION

Polish **EXCELLENT**Symmetry **EXCELLENT**Fluorescence **NONE**

Inscription(s)  LG685520070

Comments: This Laboratory Grown Diamond was created by Chemical Vapor Deposition (CVD) growth process.  
Type IIa



IGI

March 22, 2025	IGI Report No LG456520070	
ROUND BRILLIANT		
	1.55 CARAT	
	D	
	VVS 1	
	IDEAL	
	61.1%	
	68%	
	Medium to Slightly Thick (Faced)	
	Polished	
	EXCELLENT	
	EXCELLENT	
	NONE	
	891 LG456520070	
Comments: This Laboratory Grown Diamond was created by Chemical Vapor Deposition (CVD) growth process. type Icd		