

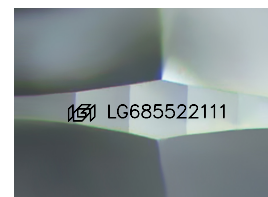
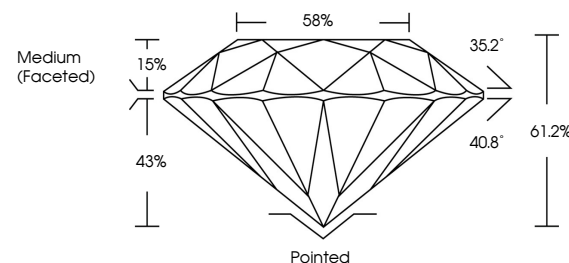


ELECTRONIC COPY

LABORATORY GROWN DIAMOND REPORT

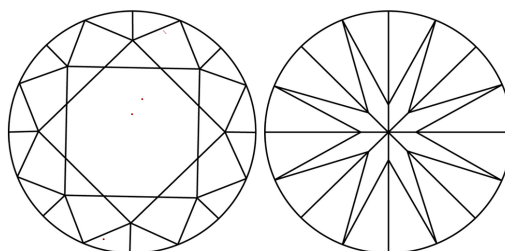
LG685522111
Report verification at [igi.org](https://www.igi.org)

PROPORTIONS



Sample Image Used

CLARITY CHARACTERISTICS



KEY TO SYMBOLS

Red symbols indicate internal characteristics.
Green symbols indicate external characteristics.

COLOR

D E F G H I J Faint Very Light Light

CLARITY

IF WS¹⁻² VS¹⁻² SI¹⁻² |¹⁻³

Internally Flawless	Very Very Slightly Included	Very Slightly Included	Slightly Included	Included
------------------------	--------------------------------	---------------------------	----------------------	----------



© IGI 2020, International Gemological Institute

FD - 10 20

www.igi.org

LABORATORY GROWN DIAMOND REPORT



April 2, 2025

IGI Report Number **LG685522111**Description **LABORATORY GROWN DIAMOND**Shape and Cutting Style **ROUND BRILLIANT**

Measurements	11.01 - 11.04 X 6.75 MM
--------------	-------------------------

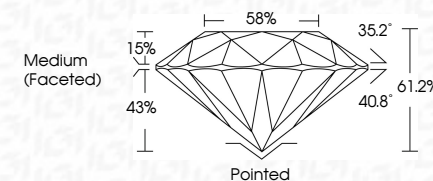
GRADING RESULTS

Carat Weight 5.04 CARATS

Color Grade

Clarity Grade WS 2

Cut Grade **IDEAL**



ADDITIONAL GRADING INFORMATION

Polish **EXCELLENT**Symmetry **EXCELLENT**Fluorescence **NONE**Inscription(s) LG685522111

Comments: This Laboratory Grown Diamond was created by Chemical Vapor Deposition (CVD) growth process.
Type IIa



April 2, 2025	Report No LG465522111	1.01 - 11.04 X 6.75 MM	Carat Weight	VVS 2	Polished	Comments: This Laboratory Grown Diamond was created by Chemical Vapor Deposition (CVD) growth process. Type IId
	ROUND BRILLIANT		Color Grade	IDEAL	EXCELLENT	
			Clarity Grade	61.2%	EXCELLENT	
			Depth	89%	NONE	
			Table	Medium (Faced)	#61 LG465522111	
			Girdle			
			Culet			
			Polish			
			Symmetry			
			Fluorescence			
			Inscriptions(s)			