



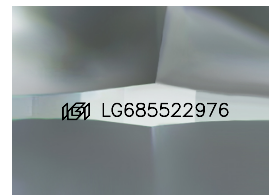
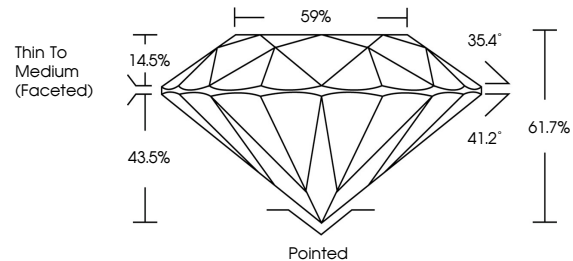
**INTERNATIONAL
GEMOLOGICAL
INSTITUTE**

ELECTRONIC COPY

LABORATORY GROWN DIAMOND REPORT

LG685522976
Report verification at igi.org

PROPORTIONS



Sample Image Used

COLOR

D E F G H I J Faint Very Light Light

CLARITY

IF	WVS ¹⁻²	VS ¹⁻²	SI ¹⁻²	I ¹⁻³
Internally Flawless	Very Very Slightly Included	Very Slightly Included	Slightly Included	Included



© IGI 2020, International Gemological Institute

FD - 10 20

www.igi.org

LABORATORY GROWN DIAMOND REPORT



February 26, 2025

IGI Report Number **LG685522976**

Description	LABORATORY GROWN DIAMOND
-------------	--------------------------

Shape and Cutting Style **ROUND BRILLIANT**

Measurements 7.03 - 7.10 X 4.36 MM

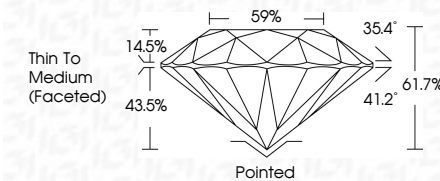
GRADING RESULTS

Carat Weight **1.33 CARAT**

Color Grade	E
-------------	---

Clarity Grade **INTERNALLY FLAWLESS**

Cut Grade **IDEAL**



ADDITIONAL GRADING INFORMATION

Polish **EXCELLENCE**Symmetry **EXCELLENCE**Fluorescence NONIInscription(s) LG68552297

Comments: As Grown - No indication of post-growth treatment.

This Laboratory Grown Diamond was created by High Pressure High Temperature (HPHT) growth process.

Type II



IG

February 26, 2025					
GJ Report No LG48592276					
ROND - 7.10 X 4.36 MM					
Carat Weight		1.33 CARAT E			
Color Grade		I/F IDEAL 61.7%			
Clarity Grade		VS1 VS2			
Depth		69%			
Table		Thin To Medium Faceted			
Girdle		Polished EXCELLENT EXCELLENT NONE			
Culet		Fluorescence (incriptions)			
Polar Plot		Symmetry Excellent			
Comments:		As Grown - No indication of post-growth treatment.			
Type I		This Laboratory Growth Diamond was synthesized by High Pressure High Temperature (HPHT) growth process.			

Comments:
As Grown - No Indication of post-growth treatment
This Laboratory Grown Diamond was credited by High Pressure High Temperature (HPHT) growth process.
Type II