



ELECTRONIC COPY

LG685535394
Report verification at igi.org



March 5, 2025
IGI Report Number **LG685535394**
Description **LABORATORY GROWN DIAMOND**
Shape and Cutting Style **CUSHION MODIFIED BRILLIANT**
Measurements **10.11 X 8.21 X 5.48 MM**
GRADING RESULTS
Carat Weight **4.10 CARATS**
Color Grade **FANCY VIVID YELLOW**
Clarity Grade **VS 1**

LABORATORY GROWN DIAMOND REPORT

March 5, 2025
IGI Report Number **LG685535394**
Description **LABORATORY GROWN DIAMOND**
Shape and Cutting Style **CUSHION MODIFIED BRILLIANT**
Measurements **10.11 X 8.21 X 5.48 MM**

GRADING RESULTS

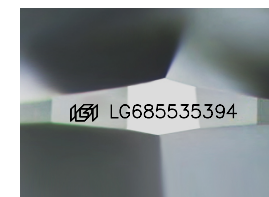
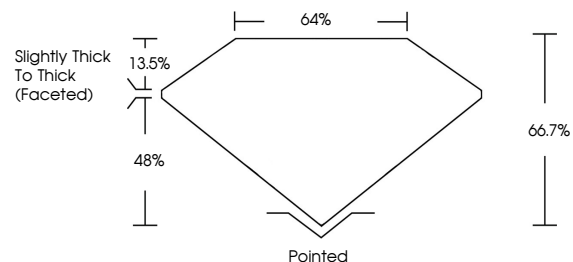
Carat Weight **4.10 CARATS**
Color Grade **FANCY VIVID YELLOW**
Clarity Grade **VS 1**

ADDITIONAL GRADING INFORMATION

Polish **EXCELLENT**
Symmetry **EXCELLENT**
Fluorescence **NONE**
Inscription(s) **LG685535394**

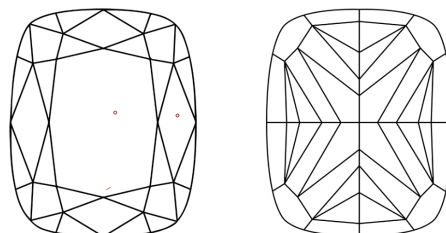
Comments: This Laboratory Grown Diamond was created by Chemical Vapor Deposition (CVD) growth process.

PROPORTIONS



Sample Image Used

CLARITY CHARACTERISTICS



KEY TO SYMBOLS

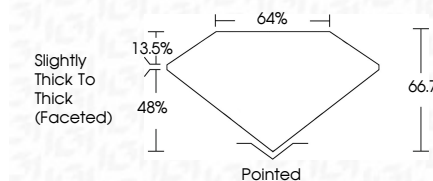
Red symbols indicate internal characteristics.
Green symbols indicate external characteristics.

COLOR

D E F G H I J Faint Very Light Light

CLARITY

IF	VS ¹⁻²	VS ¹⁻²	SI ¹⁻²	I ¹⁻³
Internally Flawless	Very Very Slightly Included	Very Slightly Included	Slightly Included	Included



ADDITIONAL GRADING INFORMATION

Polish **EXCELLENT**
Symmetry **EXCELLENT**
Fluorescence **NONE**
Inscription(s) **LG685535394**
Comments: This Laboratory Grown Diamond was created by Chemical Vapor Deposition (CVD) growth process.



March 5, 2025
IGI Report No **LG685535394**
CUSHION MODIFIED BRILLIANT
4.10 CARATS
Carat Weight **FANCY VIVID YELLOW**
Color Grade **VS 1**
Clarity Grade **66.7%**
Depth **48%**
Table **Slightly Thick To Thick (Faceted)**
Girdle **Pointed**
Culet **EXCELLENT**
Polish **EXCELLENT**
Symmetry **EXCELLENT**
Fluorescence **NONE**
Inscription(s) **LG685535394**
Comments: This Laboratory Grown Diamond was created by Chemical Vapor Deposition (CVD) growth process.