

ELECTRONIC COPY

LABORATORY GROWN DIAMOND REPORT

February 20, 2025	
IGI Report Number	LG685535957
Description	LABORATORY GROWN DIAMOND
Shape and Cutting Style	CUT CORNERED RECTANGULAR MODIFIED BRILLIANT
Measurements	8.23 X 5.70 X 3.89 MM

GRADING RESULTS

Carat Weight	1.59 CARAT
Color Grade	D
Clarity Grade	VVS 2

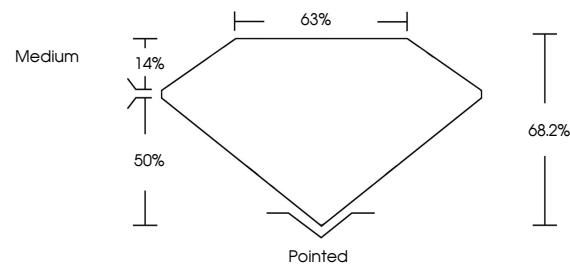
ADDITIONAL GRADING INFORMATION

Polish	EXCELLENT
Symmetry	EXCELLENT
Fluorescence	NONE
Inscription(s)	 LG685535957

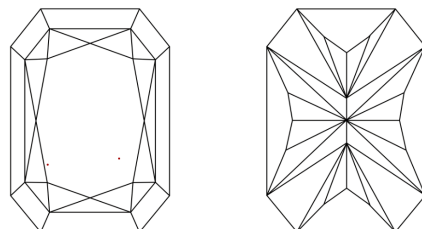
Comments: This Laboratory Grown Diamond was created by Chemical Vapor Deposition (CVD) growth process.
Type IIa

LG685535957
Report verification at igi.org

PROPORTIONS

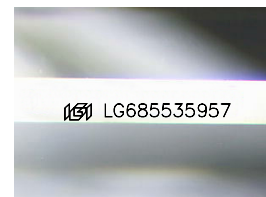


CLARITY CHARACTERISTICS



KEY TO SYMBOLS

Red symbols indicate internal characteristics.
Green symbols indicate external characteristics.



Sample Image Used

COLOR

D E F G H I J Faint Very Light Light

CLARITY

IF	VS ¹⁻²	VS ¹⁻²	SI ¹⁻²	I ¹⁻³
Internally Flawless	Very Very Slightly Included	Very Slightly Included	Slightly Included	Included

LABORATORY GROWN DIAMOND REPORT

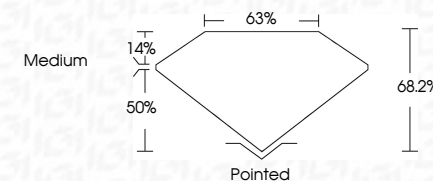


February 20, 2025	
IGI Report Number	LG685535957
Description	LABORATORY GROWN DIAMOND
Shape and Cutting Style	CUT CORNERED RECTANGULAR MODIFIED BRILLIANT

Measurements 8.23 X 5.70 X 3.89 MM

GRADING RESULTS

Carat Weight	1.59 CARAT
Color Grade	D
Clarity Grade	VVS 2



ADDITIONAL GRADING INFORMATION

Polish	EXCELLENT
Symmetry	EXCELLENT
Fluorescence	NONE
Inscription(s)	(15) LG68535957
<p>Comments: This Laboratory Grown Diamond was created by Chemical Vapor Deposition (CVD) growth process.</p> <p>Type IIa</p>	



© IGI 2020, International Gemological Institute

FD - 10 20

February 20, 2025	Report No. LG46853957
CUT REPORTED CORRECT, MODIFIED BRILLIANT	
3.23 X 5.70 X 3.99 MM	1.59 CARAT
Color Grade	D
Clarity Grade	VVS 2
Depth	66.2%
Table	65%
Girdle	Medium
Culet	Pointed
Polish	EXCELLENT
Symmetry	EXCELLENT
Fluorescence	NONE
Inscriptions(s)	1691 LG46853957
<p>Comments:</p> <p>The Laboratory Grown Diamond was analyzed using the Chemical Vapor Deposition (CVD) growth process.</p> <p>Type IIG</p>	