

**ELECTRONIC COPY**

## LABORATORY GROWN DIAMOND REPORT

|                         |  |
|-------------------------|--|
| February 25, 2025       |  |
| IGI Report Number       | LG685552178                                    |
| Description             | LABORATORY GROWN DIAMOND                       |
| Shape and Cutting Style | CUT CORNERED RECTANGULAR<br>MODIFIED BRILLIANT |
| Measurements            | 12.09 X 8.45 X 5.75 MM                         |

## GRADING RESULTS

|               |             |
|---------------|-------------|
| Carat Weight  | 5.02 CARATS |
| Color Grade   | E           |
| Clarity Grade | VS 1        |

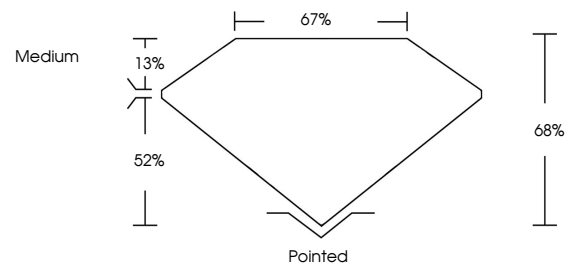
### ADDITIONAL GRADING INFORMATION

|                |   |
|----------------|---|
| Polish         | EXCELLENT   |
| Symmetry       | EXCELLENT   |
| Fluorescence   | NONE  |
| Inscription(s) |  LG685552178 |

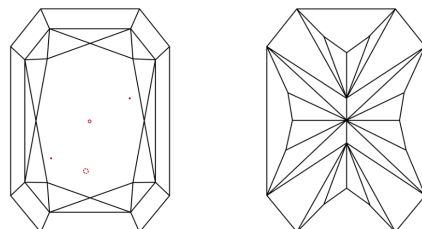
Comments: This Laboratory Grown Diamond was created by Chemical Vapor Deposition (CVD) growth process.  
Type IIa

LG685552178  
Report verification at [lgi.org](https://lgi.org)

## PROPORTIONS

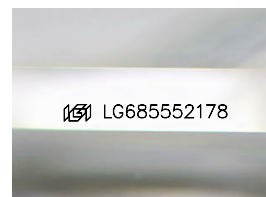


## CLARITY CHARACTERISTICS



## KEY TO SYMBOLS

Red symbols indicate internal characteristics.  
Green symbols indicate external characteristics.



Sample Image Used

## COLOR

D E F G H I J Faint Very Light Light

## CLARITY

IF      VWS<sup>1-2</sup>      VS<sup>1-2</sup>      SI<sup>1-2</sup>      I<sup>1-3</sup>

| Internally<br>Flawless | Very Very<br>Slightly Included | Very<br>Slightly Included | Slightly<br>Included | Included |
|------------------------|--------------------------------|---------------------------|----------------------|----------|
|------------------------|--------------------------------|---------------------------|----------------------|----------|

## LABORATORY GROWN DIAMOND REPORT

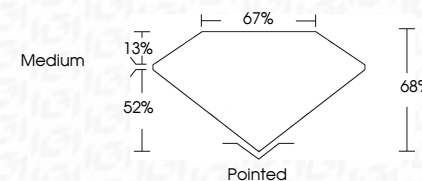


|                         |   |
|-------------------------|---|
| February 25, 2025       |   |
| IGI Report Number       | LG685552178                                       |
| Description             | LABORATORY GROWN DIAMOND                          |
| Shape and Cutting Style | CUT CORNERED<br>RECTANGULAR MODIFIED<br>BRILLIANT |

Measurements 12.09 X 8.45 X 5.75 MM

## GRADING RESULTS

|               |             |
|---------------|-------------|
| Carat Weight  | 5.02 CARATS |
| Color Grade   | E           |
| Clarity Grade | VS 1        |



### ADDITIONAL GRADING INFORMATION

|   |   |
|---|---|
| Polish  | EXCELLENT   |
| Symmetry  | EXCELLENT   |
| Fluorescence  | NONE  |
| Inscription(s)  |  LG685552178 |
| <p>Comments: This Laboratory Grown Diamond was created by Chemical Vapor Deposition (CVD) growth process.</p> <p>Type IIa</p> |   |



© IGI 2020, International Gemological Institute

FD - 10 20

|                                      |                |
|--------------------------------------|----------------|
| February 25, 2005                    | 5.02 CARATS    |
| CU Report No. LG4855278              | E              |
| CU CORNERED RECT. MODIFIED BRILLIANT | VS 1           |
| 12.09 X 8.46 X 5.75 MM               | 68%            |
|                                      | 67%            |
|                                      | Medium         |
|                                      | Pointed        |
|                                      | EXCELLENT      |
|                                      | EXCELLENT      |
|                                      | NONE           |
|                                      | 1691 LG4855278 |

Comments:

The Laboratory Grown Diamond was  
 subjected to Laser Vapor Deposition  
 (LVD) growth process.  
 type IIG