



ELECTRONIC COPY

LG685583450
Report verification at igi.org



February 28, 2025
IGI Report Number **LG685583450**
Description **LABORATORY GROWN DIAMOND**
Shape and Cutting Style **ROUND BRILLIANT**
Measurements **11.95 - 12.16 X 7.09 MM**
GRADING RESULTS
Carat Weight **6.29 CARATS**
Color Grade **G**
Clarity Grade **VS 1**
Cut Grade **EXCELLENT**

February 28, 2025
IGI Report Number **LG685583450**
Description **LABORATORY GROWN DIAMOND**
Shape and Cutting Style **ROUND BRILLIANT**
Measurements **11.95 - 12.16 X 7.09 MM**

GRADING RESULTS

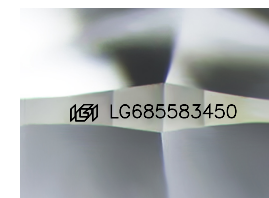
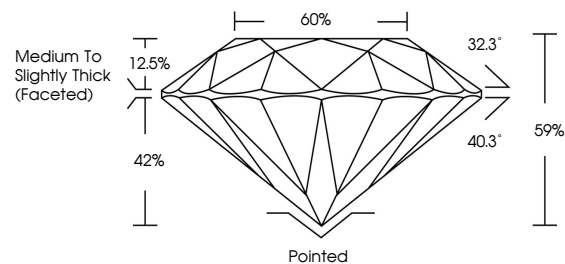
Carat Weight **6.29 CARATS**
Color Grade **G**
Clarity Grade **VS 1**
Cut Grade **EXCELLENT**

ADDITIONAL GRADING INFORMATION

Polish **VERY GOOD**
Symmetry **EXCELLENT**
Fluorescence **NONE**
Inscription(s) **IGI LG685583450**

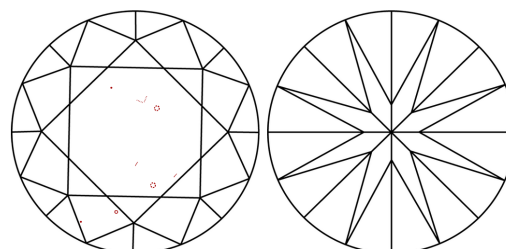
Comments: This Laboratory Grown Diamond was created by Chemical Vapor Deposition (CVD) growth process.
Type IIa

PROPORTIONS



Sample Image Used

CLARITY CHARACTERISTICS



KEY TO SYMBOLS

Red symbols indicate internal characteristics.
Green symbols indicate external characteristics.

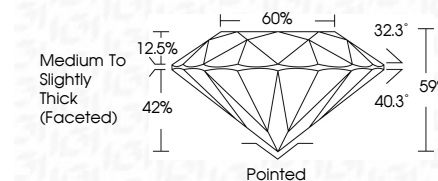
COLOR

D E F G H I J Faint Very Light Light

CLARITY

IF WS¹⁻² VS¹⁻² SI¹⁻² I¹⁻³

Internally Flawless Very Very Slightly Included Very Slightly Included Slightly Included Included



ADDITIONAL GRADING INFORMATION

Polish **VERY GOOD**
Symmetry **EXCELLENT**
Fluorescence **NONE**
Inscription(s) **IGI LG685583450**
Comments: This Laboratory Grown Diamond was created by Chemical Vapor Deposition (CVD) growth process.
Type IIa



February 28, 2025
IGI Report No LG685583450
ROUND BRILLIANT
11.95 - 12.16 X 7.09 MM
6.29 CARATS
G
VS 1
EXCELLENT
G
VS 1
EXCELLENT
NONE
IGI LG685583450
Pointed
VERY GOOD
EXCELLENT
NONE
IGI LG685583450
Medium To Slightly Thick (Faceted)

Comments: This Laboratory Grown Diamond was created by Chemical Vapor Deposition (CVD) growth process.
Type IIa