



ELECTRONIC COPY

LG685584301 Report verification at igi.org



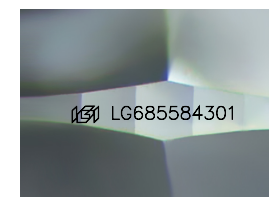
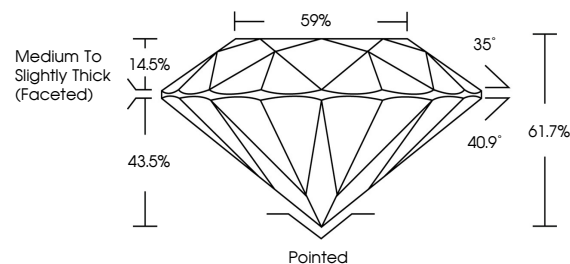
February 27, 2025 IGI Report Number LG685584301 Description LABORATORY GROWN DIAMOND Shape and Cutting Style ROUND BRILLIANT Measurements 10.97 - 11.03 X 6.78 MM GRADING RESULTS Carat Weight 5.08 CARATS Color Grade E Clarity Grade VVS 2 Cut Grade IDEAL

February 27, 2025 IGI Report Number LG685584301 Description LABORATORY GROWN DIAMOND Shape and Cutting Style ROUND BRILLIANT Measurements 10.97 - 11.03 X 6.78 MM GRADING RESULTS Carat Weight 5.08 CARATS Color Grade E Clarity Grade VVS 2 Cut Grade IDEAL

ADDITIONAL GRADING INFORMATION Polish EXCELLENT Symmetry EXCELLENT Fluorescence NONE Inscription(s) IGI LG685584301

Comments: This Laboratory Grown Diamond was created by Chemical Vapor Deposition (CVD) growth process. Type IIa

PROPORTIONS



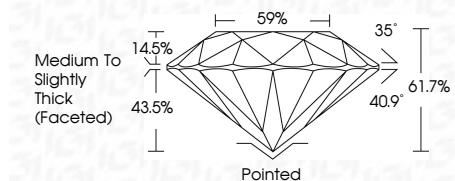
Sample Image Used

COLOR

D E F G H I J Faint Very Light Light

CLARITY

IF WS 1-2 VS 1-2 SI 1-2 I 1-3 Internally Flawless Very Very Slightly Included Very Slightly Included Slightly Included Included



ADDITIONAL GRADING INFORMATION

Polish EXCELLENT Symmetry EXCELLENT Fluorescence NONE Inscription(s) IGI LG685584301 Comments: This Laboratory Grown Diamond was created by Chemical Vapor Deposition (CVD) growth process. Type IIa



February 27, 2025 IGI Report No LG685584301 ROUND BRILLIANT 10.97 - 11.03 X 6.78 MM 5.08 CARATS E Color Grade VVS 2 IDEAL Clarity Grade VVS 2 61.7% Depth 43.5% Table 14.5% Girdle 35% Medium To Slightly Thick (Faceted) Pointed EXCELLENT EXCELLENT NONE NONE IGI LG685584301 Comments: This Laboratory Grown Diamond was created by Chemical Vapor Deposition (CVD) growth process. Type IIa