

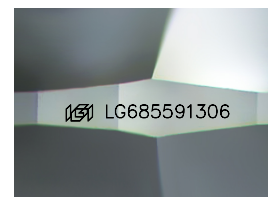
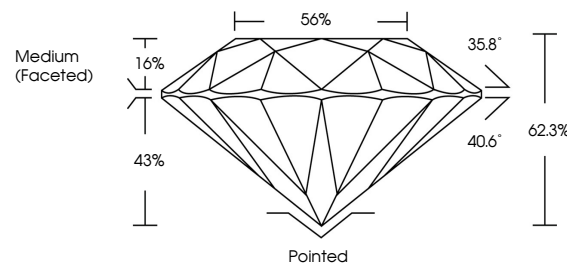


**ELECTRONIC COPY**

## LABORATORY GROWN DIAMOND REPORT

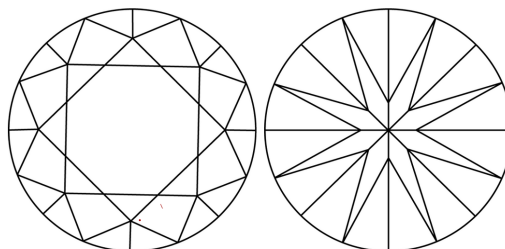
LG685591306  
Report verification at [igi.org](http://igi.org)

## PROPORTIONS



Sample Image Used

## CLARITY CHARACTERISTICS



### KEY TO SYMBOLS

Red symbols indicate internal characteristics.  
Green symbols indicate external characteristics.

## COLOR

D E F G H I J Faint Very Light Light

## CLARITY

IF WS<sup>1-2</sup> VS<sup>1-2</sup> SI<sup>1-2</sup> |<sup>1-3</sup>

Internally Flawless	Very Very Slightly Included	Very Slightly Included	Slightly Included	Included
------------------------	--------------------------------	---------------------------	----------------------	----------

## LABORATORY GROWN DIAMOND REPORT



March 1, 2025

IGI Report Number **LG685591306**Description **LABORATORY GROWN DIAMOND**Shape and Cutting Style **ROUND BRILLIANT**

Measurements 6.79 - 6.82 X 4.23 MM

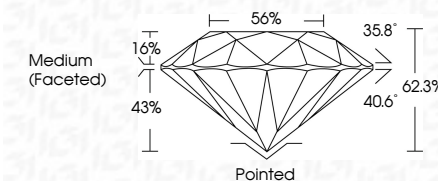
## GRADING RESULTS

Carat Weight **1.20 CARAT**

Color Grade F

Clarity Grade **VVS 2**

Cut Grade **IDEAL**



### ADDITIONAL GRADING INFORMATION

Polish **EXCELLENT**Symmetry **EXCELLENT**Fluorescence **NONE**Inscription(s)  LG685591300

Comments: This Laboratory Grown Diamond was created by Chemical Vapor Deposition (CVD) growth process.  
Type IIa



© IGI 2020, International Gemological Institute

FD - 10 20



THIS DOCUMENT WAS PRODUCED WITH THE FOLLOWING SECURITY MEASURES: SPECIAL DOCUMENT PAPER, INK SCREENS, WATERMARK, BACKGROUND DESIGNS, HOLOGRAM AND OTHER SECURITY FEATURES NOT LISTED AND DO EXCEED DOCUMENT SECURITY INDUSTRY GUIDELINES

**www.igi.org**

<b>March 1, 2028</b>	<b>GJ Report No LG685971305</b>	<b>1.20 CARAT</b>	<b>VVS 2</b>	<b>Pointed</b>	<b>Comments:</b> The Laboratory Grown Diamond was created by Chemical Vapor Deposition (CVD) growth process.  Type IIa
<b>ROUND BRILLIANT</b>	<b>Color Grade</b>	<b>W6 2</b>	<b>IDEAL</b>	<b>EXCELLENT</b>	
<b>6.42 X 6.42 X 4.23 MM</b>	<b>Coral Weight</b>	<b>62.5%</b>	<b>50%</b>	<b>NONE</b>	
			<b>Medium (Faceted)</b>	<b>(#) LG685971305</b>	
	<b>Color Grade</b>	<b>Darfy Grade</b>	<b>Darf Grade</b>	<b>Symmetry</b>	
	<b>Clarity</b>	<b>Flawable</b>	<b>Flawable</b>	<b>Fluorescence(s)</b>	
	<b>Grade</b>				
				<b>Culet</b>	
				<b>Poish</b>	