

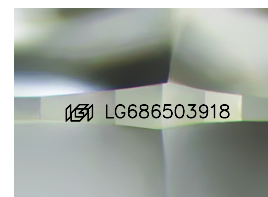
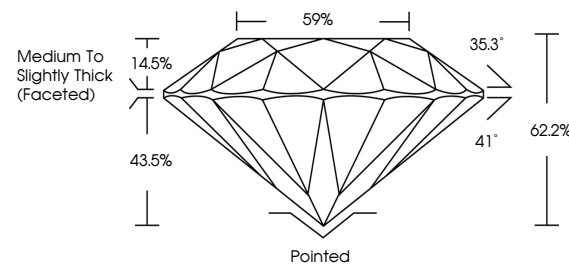


ELECTRONIC COPY

LABORATORY GROWN DIAMOND REPORT

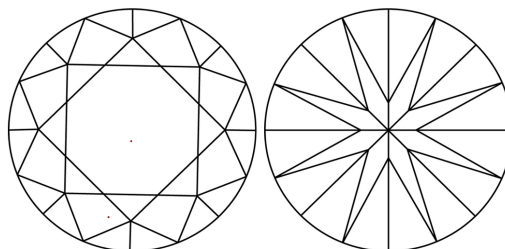
LG686503918
Report verification at igi.org

PROPORTIONS



Sample Image Used

CLARITY CHARACTERISTICS



KEY TO SYMBOLS

Red symbols indicate internal characteristics.
Green symbols indicate external characteristics.

COLOR

D E F G H I J Faint Very Light Light

CLARITY

IF WS¹⁻² VS¹⁻² SI¹⁻² |¹⁻³

Internally Flawless	Very Very Slightly Included	Very Slightly Included	Slightly Included	Included
------------------------	--------------------------------	---------------------------	----------------------	----------



© IGI 2020, International Gemological Institute

FD - 10 20

www.igi.org

LABORATORY GROWN DIAMOND REPORT



March 4, 2025

IGI Report Number **LG686503918**Description **LABORATORY GROWN DIAMOND**Shape and Cutting Style **ROUND BRILLIANT**

Measurements 10.13 - 10.18 X 6.31 MM

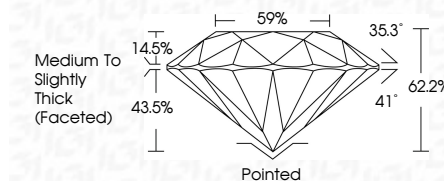
GRADING RESULTS

Carat Weight **4.09 CARATS**

Color Grade	F
-------------	---

Clarity Grade VVS 2

Cut Grade **EXCELLENT**



ADDITIONAL GRADING INFORMATION

Polish **EXCELLENT**Symmetry **EXCELLENT**Fluorescence **NONE**Inscription(s) LG686503918

Comments: This Laboratory Grown Diamond was created by Chemical Vapor Deposition (CVD) growth process.
Type IIa



	March 4, 2026	GJ Report No LG96850978	
		ROUND BRILLIANT	
		10.13 x .1018 x 6.31 MM	
		Color Weight	4.09 CARATS
		Color Grade	F 2
		Cutty Grade	VW S 2
		Cut Grade	EXCELLENT
		Depth	62.2%
		Tabelle	95%
		Grade	Medium To Slightly Thick Facetted
		Clarity	Patched EXCELLENT
		Symmetry	EXCELLENT
		Fluorescence	NONE
		Impurities(3)	(#)LG96850978
		Comments:	Laboratory Grown Diamond was created by Chemical Vapor Deposition type IIA