



**INTERNATIONAL
GEMOLOGICAL
INSTITUTE**

ELECTRONIC COPY

LABORATORY GROWN DIAMOND REPORT

April 2, 2025	
IGI Report Number	LG687505730
Description	LABORATORY GROWN DIAMOND
Shape and Cutting Style	ROUND BRILLIANT
Measurements	11.75 - 11.83 X 7.14 MM

GRADING RESULTS

Carat Weight	6.03 CARATS
Color Grade	F
Clarity Grade	VVS 2
Cut Grade	IDEAL

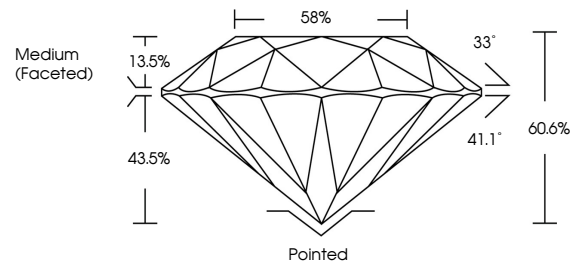
ADDITIONAL GRADING INFORMATION

Polish	EXCELLENT
Symmetry	EXCELLENT
Fluorescence	NONE
Inscription(s)	 LG687505730

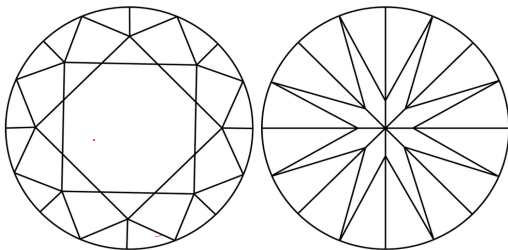
Comments: This Laboratory Grown Diamond was created by Chemical Vapor Deposition (CVD) growth process.
Type IIa

LG687505730
Report verification at igi.org

PROPORTIONS

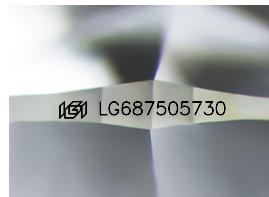


CLARITY CHARACTERISTICS



KEY TO SYMBOLS

Red symbols indicate internal characteristics.
Green symbols indicate external characteristics.



Sample Image Used

COLOR

D E F G H I J Faint Very Light Light

CLARITY

IF WS¹⁻² VS¹⁻² SI¹⁻² I¹⁻³

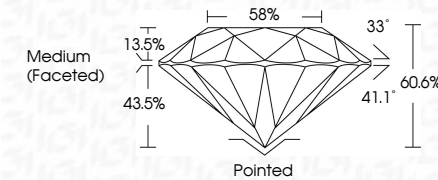
Internally Flawless	Very Very Slightly Included	Very Slightly Included	Slightly Included	Included
------------------------	--------------------------------	---------------------------	----------------------	----------



April 2, 2025	
IGI Report Number	LG687505730
Description	LABORATORY GROWN DIAMOND
Shape and Cutting Style	ROUND BRILLIANT
Measurements	11.75 - 11.83 X 7.14 MM

GRADING RESULTS

Carat Weight	6.03 CARATS
Color Grade	F
Clarity Grade	VVS 2
Cut Grade	IDEAL



ADDITIONAL GRADING INFORMATION

Polish	EXCELLENT
Symmetry	EXCELLENT
Fluorescence	NONE
Inscription(s)	 LG687505730
Comments: This Laboratory Grown Diamond was created by Chemical Vapor Deposition (CVD) growth process.	
Type IIa	



IG



© IGI 2020, International Gemological Institute

FD - 10 20

www.igi.org

THIS DOCUMENT WAS PRODUCED WITH THE FOLLOWING SECURITY MEASURES: SPECIAL DOCUMENT PAPER, INK SCREENS, WATERMARK, BACKGROUND PATTERN, HIGH QUALITY AND OTHER SECURITY FEATURES ARE USED, AND DO NOT DISCLOSE DOCUMENTS TO OTHERS WITHOUT YOUR AUTHORITY.

April 2, 2025
IGI Report No LG687505730
ROUND BRILLIANT

11.75 - 11.83 X 7.14 MM	6.03 CARATS
Carat Weight	F
Color Grade	VVS 2
Clarity Grade	IDEAL
Cut Grade	60.0%
Depth	58%
Table	Medium (faceted)
Girdle	
Culet	Pointed
Polish	EXCELLENT
Symmetry	EXCELLENT
Fluorescence	NONE
Inscriptions	4611 C4572702750

Comments:
This Laboratory Grown Diamond was created by Chemical Vapor Deposition (CVD) growth process.