



ELECTRONIC COPY

LG687529780
Report verification at igi.org



March 17, 2025
IGI Report Number **LG687529780**
Description **LABORATORY GROWN DIAMOND**
Shape and Cutting Style **PRINCESS CUT**
Measurements **6.30 X 6.03 X 4.42 MM**
GRADING RESULTS
Carat Weight **1.50 CARAT**
Color Grade **FANCY INTENSE PINK**
Clarity Grade **VVS 2**

March 17, 2025
IGI Report Number **LG687529780**
Description **LABORATORY GROWN DIAMOND**
Shape and Cutting Style **PRINCESS CUT**
Measurements **6.30 X 6.03 X 4.42 MM**

GRADING RESULTS

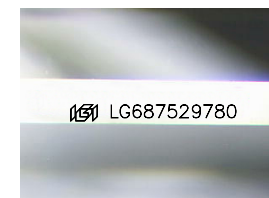
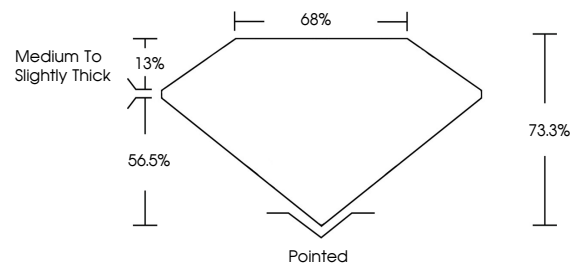
Carat Weight **1.50 CARAT**
Color Grade **FANCY INTENSE PINK**
Clarity Grade **VVS 2**

ADDITIONAL GRADING INFORMATION

Polish **VERY GOOD**
Symmetry **VERY GOOD**
Fluorescence **SLIGHT**
Inscription(s) **LG687529780**

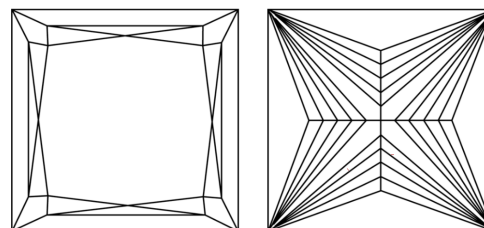
Comments: This Laboratory Grown Diamond was created by Chemical Vapor Deposition (CVD) growth process. Indications of post-growth treatment.

PROPORTIONS



Sample Image Used

CLARITY CHARACTERISTICS



KEY TO SYMBOLS

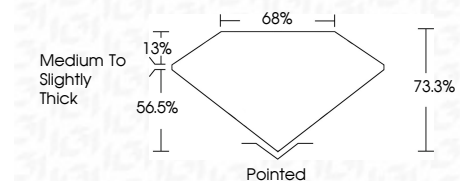
Red symbols indicate internal characteristics.
Green symbols indicate external characteristics.

COLOR

D E F G H I J Faint Very Light Light

CLARITY

IF	VS ¹⁻²	VVS ¹⁻²	S ¹⁻²	I ¹⁻³
Internally Flawless	Very Very Slightly Included	Very Slightly Included	Slightly Included	Included



ADDITIONAL GRADING INFORMATION

Polish **VERY GOOD**
Symmetry **VERY GOOD**
Fluorescence **SLIGHT**
Inscription(s) **LG687529780**
Comments: This Laboratory Grown Diamond was created by Chemical Vapor Deposition (CVD) growth process. Indications of post-growth treatment.



March 17, 2025
IGI Report No **LG687529780**
PRINCESS CUT
1.50 CARAT
Carat Weight **FANCY INTENSE PINK**
Color Grade **VVS 2**
Depth **73.3%**
Table **68%**
Girdle **Medium to Slightly Thick**
Culet **Pointed**
Polish **VERY GOOD**
Symmetry **VERY GOOD**
Fluorescence **SLIGHT**
Inscription(s) **LG687529780**
Comments: This Laboratory Grown Diamond was created by Chemical Vapor Deposition (CVD) growth process. Indications of post-growth treatment.