



**ELECTRONIC COPY**

LG687529801  
Report verification at igi.org



March 13, 2025

IGI Report Number **LG687529801**

Description **LABORATORY GROWN DIAMOND**

Shape and Cutting Style **EMERALD CUT**

Measurements **7.39 X 5.15 X 3.40 MM**

**GRADING RESULTS**

Carat Weight **1.26 CARAT**

Color Grade **FANCY VIVID BLUE**

Clarity Grade **VS 1**

March 13, 2025  
IGI Report Number **LG687529801**  
Description **LABORATORY GROWN DIAMOND**  
Shape and Cutting Style **EMERALD CUT**  
Measurements **7.39 X 5.15 X 3.40 MM**

**GRADING RESULTS**

Carat Weight **1.26 CARAT**

Color Grade **FANCY VIVID BLUE**

Clarity Grade **VS 1**

**ADDITIONAL GRADING INFORMATION**

Polish **EXCELLENT**

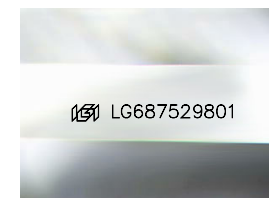
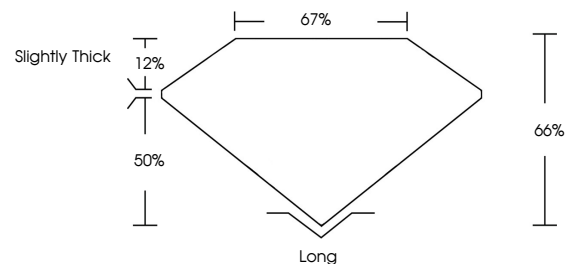
Symmetry **EXCELLENT**

Fluorescence **NONE**

Inscription(s) **IGI LG687529801**

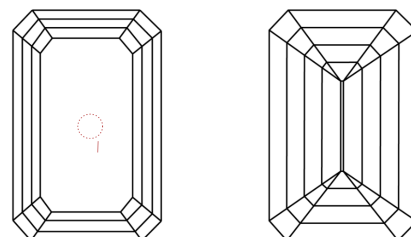
Comments: This Laboratory Grown Diamond was created by Chemical Vapor Deposition (CVD) growth process.  
Indications of post-growth treatment.

**PROPORTIONS**



Sample Image Used

**CLARITY CHARACTERISTICS**



**KEY TO SYMBOLS**

Red symbols indicate internal characteristics.  
Green symbols indicate external characteristics.

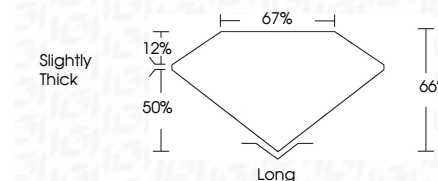
**COLOR**

D E F G H I J Faint Very Light Light

**CLARITY**

IF WS<sup>1-2</sup> VS<sup>1-2</sup> SI<sup>1-2</sup> I<sup>1-3</sup>

Internally Flawless Very Very Slightly Included Very Slightly Included Slightly Included Included



**ADDITIONAL GRADING INFORMATION**

Polish **EXCELLENT**

Symmetry **EXCELLENT**

Fluorescence **NONE**

Inscription(s) **IGI LG687529801**

Comments: This Laboratory Grown Diamond was created by Chemical Vapor Deposition (CVD) growth process.  
Indications of post-growth treatment.



March 13, 2025  
IGI Report No LG687529801  
**EMERALD CUT**

1.26 CARAT  
Carat Weight  
Color Grade **FANCY VIVID BLUE**

VS 1  
Clarity Grade

66%  
Depth

67%  
Table

Slightly Thick  
Girdle

Long  
Culet  
Polish **EXCELLENT**

EXCELLENT  
Symmetry

NONE  
Fluorescence

IGI LG687529801  
Inscription(s)

Comments: This Laboratory Grown Diamond was created by Chemical Vapor Deposition (CVD) growth process.  
Indications of post-growth treatment.