



**ELECTRONIC COPY**

LG687529914  
Report verification at igi.org



March 13, 2025  
IGI Report Number **LG687529914**  
Description **LABORATORY GROWN DIAMOND**  
Shape and Cutting Style **ROUND BRILLIANT**  
Measurements **9.32 - 9.39 X 5.67 MM**  
**GRADING RESULTS**  
Carat Weight **3.17 CARATS**  
Color Grade **FANCY INTENSE PINK**  
Clarity Grade **VS 1**  
Cut Grade **VERY GOOD**

March 13, 2025  
IGI Report Number **LG687529914**  
Description **LABORATORY GROWN DIAMOND**  
Shape and Cutting Style **ROUND BRILLIANT**  
Measurements **9.32 - 9.39 X 5.67 MM**

**GRADING RESULTS**

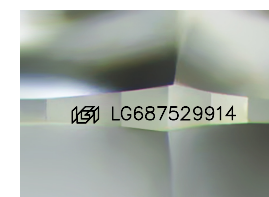
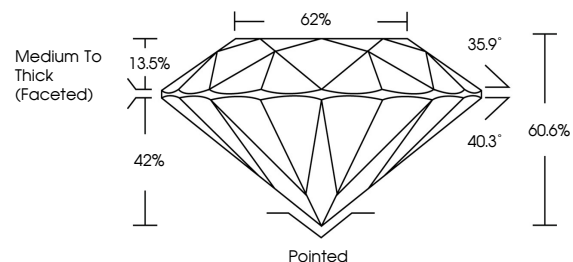
Carat Weight **3.17 CARATS**  
Color Grade **FANCY INTENSE PINK**  
Clarity Grade **VS 1**  
Cut Grade **VERY GOOD**

**ADDITIONAL GRADING INFORMATION**

Polish **VERY GOOD**  
Symmetry **GOOD**  
Fluorescence **SLIGHT**  
Inscription(s) **IGI LG687529914**

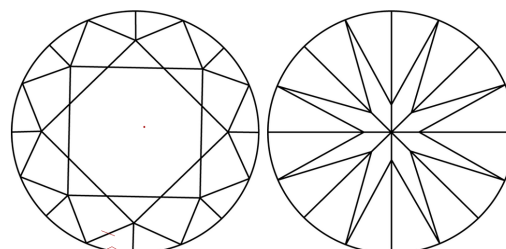
Comments: This Laboratory Grown Diamond was created by Chemical Vapor Deposition (CVD) growth process.  
Indications of post-growth treatment.

**PROPORTIONS**



Sample Image Used

**CLARITY CHARACTERISTICS**



**KEY TO SYMBOLS**

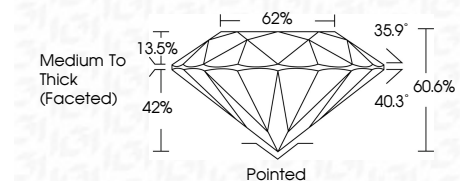
Red symbols indicate internal characteristics.  
Green symbols indicate external characteristics.

**COLOR**

D E F G H I J Faint Very Light Light

**CLARITY**

IF	VS <sup>1-2</sup>	VS <sup>1-2</sup>	SI <sup>1-2</sup>	I <sup>1-3</sup>
Internally Flawless	Very Very Slightly Included	Very Slightly Included	Slightly Included	Included



**ADDITIONAL GRADING INFORMATION**

Polish **VERY GOOD**  
Symmetry **GOOD**  
Fluorescence **SLIGHT**  
Inscription(s) **IGI LG687529914**  
Comments: This Laboratory Grown Diamond was created by Chemical Vapor Deposition (CVD) growth process.  
Indications of post-growth treatment.



**IGI**



March 13, 2025  
IGI Report No LG687529914  
**ROUND BRILLIANT**  
3.17 CARATS  
FANCY INTENSE PINK  
VS 1  
VERY GOOD  
60.6%  
62%  
Medium To Thick (Faceted)  
Pointed  
VERY GOOD  
GOOD  
SLIGHT  
IGI LG687529914  
Comments: This Laboratory Grown Diamond was created by Chemical Vapor Deposition (CVD) growth process.  
Indications of post-growth treatment.