



ELECTRONIC COPY

LG687529924
Report verification at igi.org



March 13, 2025
IGI Report Number **LG687529924**
Description **LABORATORY GROWN DIAMOND**
Shape and Cutting Style **ROUND BRILLIANT**
Measurements **6.52 - 6.57 X 3.90 MM**
GRADING RESULTS
Carat Weight **1.04 CARAT**
Color Grade **FANCY INTENSE PINK**
Clarity Grade **VS 2**
Cut Grade **GOOD**

March 13, 2025
IGI Report Number **LG687529924**
Description **LABORATORY GROWN DIAMOND**
Shape and Cutting Style **ROUND BRILLIANT**
Measurements **6.52 - 6.57 X 3.90 MM**

GRADING RESULTS

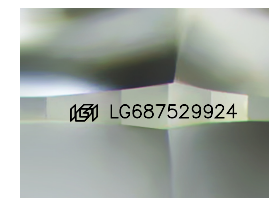
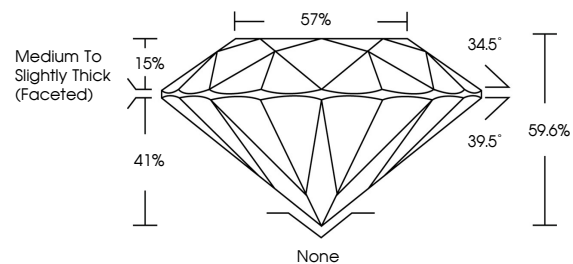
Carat Weight **1.04 CARAT**
Color Grade **FANCY INTENSE PINK**
Clarity Grade **VS 2**
Cut Grade **GOOD**

ADDITIONAL GRADING INFORMATION

Polish **VERY GOOD**
Symmetry **VERY GOOD**
Fluorescence **SLIGHT**
Inscription(s) **IGI LG687529924**

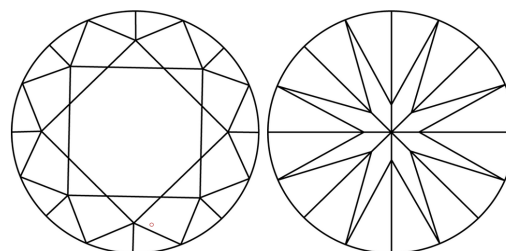
Comments: This Laboratory Grown Diamond was created by Chemical Vapor Deposition (CVD) growth process.
Indications of post-growth treatment.

PROPORTIONS



Sample Image Used

CLARITY CHARACTERISTICS



KEY TO SYMBOLS

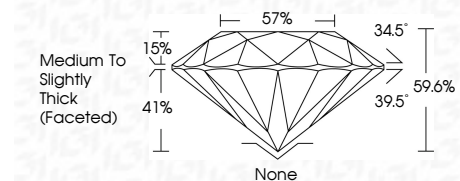
Red symbols indicate internal characteristics.
Green symbols indicate external characteristics.

COLOR

D E F G H I J Faint Very Light Light

CLARITY

| | | | | |
|---------------------|-----------------------------|------------------------|-------------------|------------------|
| IF | VS ¹⁻² | VS ¹⁻² | SI ¹⁻² | I ¹⁻³ |
| Internally Flawless | Very Very Slightly Included | Very Slightly Included | Slightly Included | Included |



ADDITIONAL GRADING INFORMATION

Polish **VERY GOOD**
Symmetry **VERY GOOD**
Fluorescence **SLIGHT**
Inscription(s) **IGI LG687529924**
Comments: This Laboratory Grown Diamond was created by Chemical Vapor Deposition (CVD) growth process.
Indications of post-growth treatment.



March 13, 2025
IGI Report No LG687529924
ROUND BRILLIANT
6.52 - 6.57 X 3.90 MM
1.04 CARAT
FANCY INTENSE PINK
Color Grade
Clarity Grade
Depth
Table
Girdle
None
VERY GOOD
VERY GOOD
SLIGHT
IGI LG687529924
Medium To Slightly Thick (Faceted)

Comments: This Laboratory Grown Diamond was created by Chemical Vapor Deposition (CVD) growth process.
Indications of post-growth treatment.