

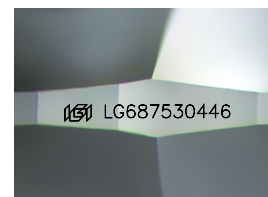
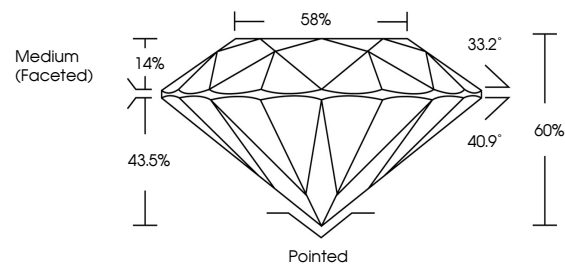


ELECTRONIC COPY

LABORATORY GROWN DIAMOND REPORT

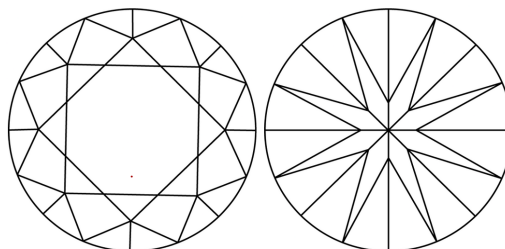
LG687530446
Report verification at igi.org

PROPORTIONS



Sample Image Used

CLARITY CHARACTERISTICS



KEY TO SYMBOLS

Red symbols indicate internal characteristics.
Green symbols indicate external characteristics.

COLOR

D E F G H I J Faint Very Light Light

CLARITY

IF WS¹⁻² VS¹⁻² SI¹⁻² |¹⁻³

Internally Flawless	Very Very Slightly Included	Very Slightly Included	Slightly Included	Included
------------------------	--------------------------------	---------------------------	----------------------	----------

LABORATORY GROWN DIAMOND REPORT



March 23, 2025

IGI Report Number **LG687530446**Description **LABORATORY GROWN DIAMOND**Shape and Cutting Style **ROUND BRILLIANT**

Measurements 7.62 - 7.64 X 4.58 MM

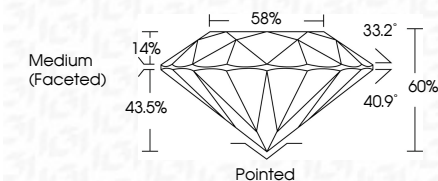
GRADING RESULTS

Carat Weight **1.61 CARAT**

Color Grade F

Clarity Grade **VVS 2**

Cut Grade **IDEAL**



ADDITIONAL GRADING INFORMATION

Polish **EXCELLENT**Symmetry **EXCELLENT**Fluorescence **NONE**Inscription(s) LG687530446

Comments: This Laboratory Grown Diamond was created by Chemical Vapor Deposition (CVD) growth process.
Type IIa



© IGI 2020, International Gemological Institute

FD - 10 20

www.igi.org



THIS DOCUMENT WAS PRODUCED WITH THE FOLLOWING SECURITY MEASURES: SPECIAL DOCUMENT PAPER, INK SCREENS, WATERMARK, BACKGROUND DESIGNS, HOLOGRAM AND OTHER SECURITY FEATURES NOT LISTED AND DO EXCEED DOCUMENT SECURITY INDUSTRY GUIDELINE

March 23, 2025	GI Report No LG687530446	
ROUND BRILLIANT		
6.62 - 7.64 X 4.58 MM		
Carat Weight	1.61 CARAT	
Color Grade	VVS 2	
Clarity Grade	IDEAL	
Cut Grade	65%	
Depth	85%	
Table		
Girdle	Medium (Faceted)	
Culet	Pointed	
Polish	EXCELLENT	
Symmetry	EXCELLENT	
Fluorescence	NONE	
Inclusions(s)	#68 LG687530446	
Comments:		
	This Laboratory Grown Diamond was created by Chemical Vapor Deposition (CVD) growth process.	
	Type IIa	