



ELECTRONIC COPY

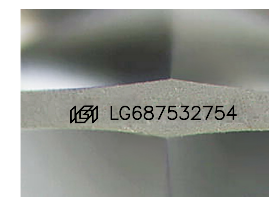
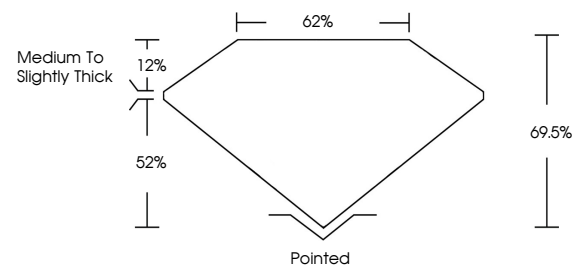
LG687532754
Report verification at igi.org



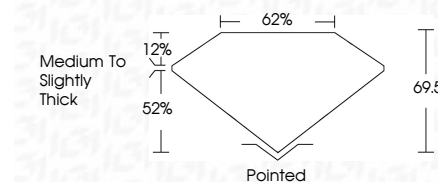
March 4, 2025
IGI Report Number **LG687532754**
Description **LABORATORY GROWN DIAMOND**
Shape and Cutting Style **CUSHION BRILLIANT**
Measurements **10.11 X 7.21 X 5.01 MM**
GRADING RESULTS
Carat Weight **3.11 CARATS**
Color Grade **F**
Clarity Grade **VVS 2**

March 4, 2025
IGI Report Number **LG687532754**
Description **LABORATORY GROWN DIAMOND**
Shape and Cutting Style **CUSHION BRILLIANT**
Measurements **10.11 X 7.21 X 5.01 MM**
GRADING RESULTS
Carat Weight **3.11 CARATS**
Color Grade **F**
Clarity Grade **VVS 2**

PROPORTIONS



Sample Image Used



ADDITIONAL GRADING INFORMATION

Polish **EXCELLENT**
Symmetry **EXCELLENT**
Fluorescence **NONE**
Inscription(s) **IGI LG687532754**

Comments: This Laboratory Grown Diamond was created by Chemical Vapor Deposition (CVD) growth process.
Type IIa

ADDITIONAL GRADING INFORMATION

Polish **EXCELLENT**
Symmetry **EXCELLENT**
Fluorescence **NONE**
Inscription(s) **IGI LG687532754**
Comments: This Laboratory Grown Diamond was created by Chemical Vapor Deposition (CVD) growth process.
Type IIa

COLOR

D E F G H I J Faint Very Light Light

CLARITY

IF	VS ¹⁻²	VS ¹⁻²	SI ¹⁻²	I ¹⁻³
Internally Flawless	Very Very Slightly Included	Very Slightly Included	Slightly Included	Included



IGI



March 4, 2025
IGI Report No **LG687532754**
CUSHION BRILLIANT
10.11 X 7.21 X 5.01 MM
3.11 CARATS
F
VVS 2
69.5%
62%
Medium to Slightly Thick
Pointed
EXCELLENT
EXCELLENT
NONE
IGI LG687532754

Comments: This Laboratory Grown Diamond was created by Chemical Vapor Deposition (CVD) growth process.
Type IIa