

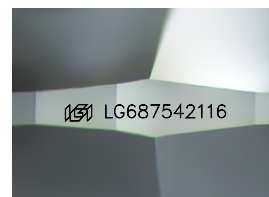
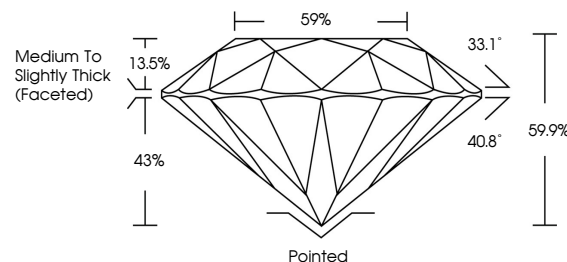


ELECTRONIC COPY

LABORATORY GROWN DIAMOND REPORT

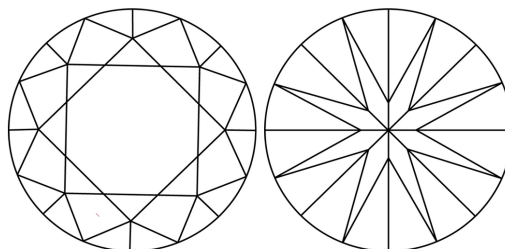
LG687542116
Report verification at lgi.org

PROPORTIONS



Sample Image Used

CLARITY CHARACTERISTICS



KEY TO SYMBOLS

Red symbols indicate internal characteristics.
Green symbols indicate external characteristics.

COLOR

D E F G H I J Faint Very Light Light

CLARITY

IF WS¹⁻² VS¹⁻² S¹⁻² |¹⁻³

Internally Flawless	Very Very Slightly Included	Very Slightly Included	Slightly Included	Included
------------------------	--------------------------------	---------------------------	----------------------	----------



© IGI 2020, International Gemological Institute

FD - 10 20

www.igi.org

LABORATORY GROWN DIAMOND REPORT



April 10, 2025

IGI Report Number **LG687542116**Description **LABORATORY GROWN DIAMOND**Shape and Cutting Style **ROUND BRILLIANT**

Measurements 6.48 - 6.52 X 3.89 MM

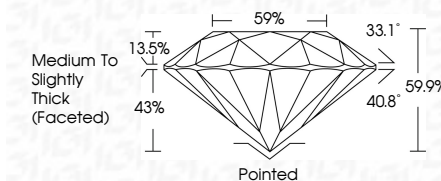
GRADING RESULTS

Carat Weight 1.00 CARAT

Color Grade	D
-------------	---

Clarity Grade **VVS 2**

Cut Grade **IDEAL**



ADDITIONAL GRADING INFORMATION

Polish **EXCELLENT**Symmetry **EXCELLENT**Fluorescence **NONE**Inscription(s) LG687542116

Comments: As Grown - No indication of post-growth treatment.

This Laboratory Grown Diamond was created by High Pressure High Temperature (HPHT) growth process.
Type II



IG

April 10, 2026	2.00 CARAT	D	VVS 2	PAINTED	EXCELLENT	NONE	8891G5687542116
GI Report No. LG587542116	Coral Weight	Color Grade	Clarity Grade	Medium to Slightly Medium (Faceted)	EXCELLENT	NONE	
ROUND BRILLIANT			Cut Grade				
			Depth				
			Table				
			Grade				
			Culet				
			Polish				
			Symmetry				
			Fluorescence				

Comments: 1. No indication of post-growth treatment.
 2. This Laboratory Grown Diamond was created by High Pressure High Temperature (HPHT) growth process.
 Type IIa