

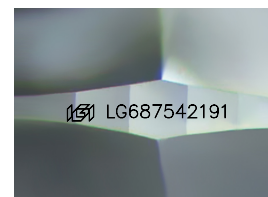
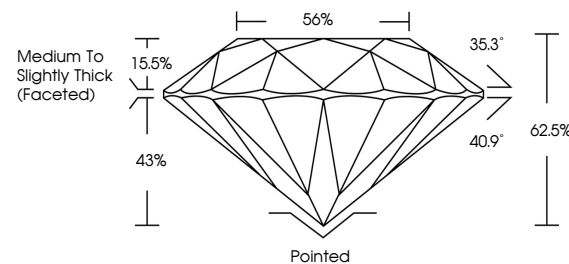


ELECTRONIC COPY

LABORATORY GROWN DIAMOND REPORT

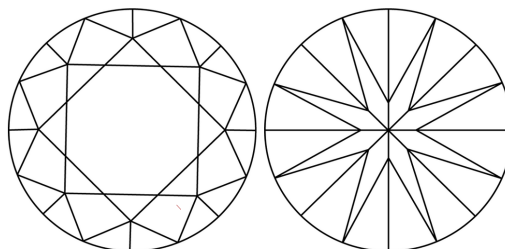
LG687542191
Report verification at igi.org

PROPORTIONS



Sample Image Used

CLARITY CHARACTERISTICS



KEY TO SYMBOLS

Red symbols indicate internal characteristics.
Green symbols indicate external characteristics.

COLOR

D E F G H I J Faint Very Light Light

CLARITY

IF WS¹⁻² VS¹⁻² S¹⁻² |¹⁻³

Internally Flawless	Very Very Slightly Included	Very Slightly Included	Slightly Included	Included
------------------------	--------------------------------	---------------------------	----------------------	----------



© IGI 2020, International Gemological Institute

FD - 10 20

www.igi.org

LABORATORY GROWN DIAMOND REPORT



April 15, 2025

IGI Report Number **LG687542191**Description **LABORATORY GROWN DIAMOND**Shape and Cutting Style **ROUND BRILLIANT**

Measurements 6.36 - 6.40 X 3.99 MM

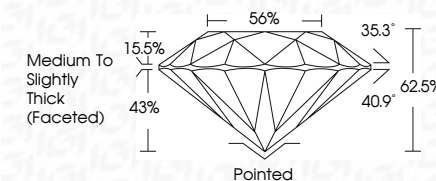
GRADING RESULTS

Carat Weight 1.00 CARAT

Color Grade D

Clarity Grade **VS 2**

Cut Grade **IDEAL**



ADDITIONAL GRADING INFORMATION

Polish **EXCELLENT**Symmetry **EXCELLENT**Fluorescence **NONE**Inscription(s)  LG687542191

Comments: As Grown - No indication of post-growth treatment.

This Laboratory Grown Diamond was created by High Pressure High Temperature (HPHT) growth process.

Type II



April 15, 2025	Report No. LG487542191	1.00 CARAT
ROUND BRILLIANT		D
3.54 - 4.40 X 3.99 MM		VS 2
Color Weight		IDEAL
Color Grade		62.8%
Clarity Grade		56%
Depth		Medium to Slightly Thick (Faceted)
Cut Grade		Pointed
Table		EXCELLENT
Grain		EXCELLENT
		NONE
		4691567562191

Comments:

to be Grown - No indication of post-growth treatment.

This Laboratory Grown Diamond was created by High Pressure High Temperature (HPHT) growth process.

Type II