



**INTERNATIONAL
GEMOLOGICAL
INSTITUTE**

ELECTRONIC COPY

LG687567494
Report verification at igi.org

LABORATORY GROWN DIAMOND REPORT



March 4, 2025

IGI Report Number **LG687567494**Description **LABORATORY GROWN DIAMOND**Shape and Cutting Style **ROUND BRILLIANT**

Measurements **7.43 - 7.48 X 4.53 MM**

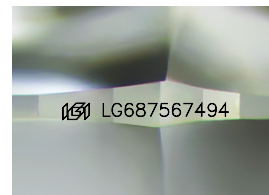
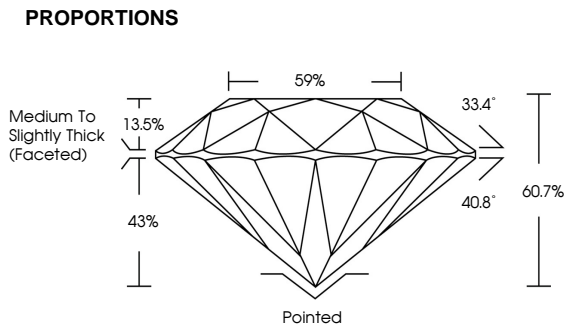
GRADING RESULTS

Carat Weight 1.55 CARAT

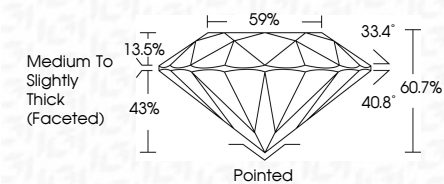
Color Grade **D**

Clarity Grade VS 1

Cut Grade **IDEAL**



Sample Image Used



COLOR

D E F G H I J Faint Very Light Light

CLARITY

IF WS¹⁻² VS¹⁻² SI¹⁻² |¹⁻³

Internally Flawless	Very Very Slightly Included	Very Slightly Included	Slightly Included	Included
------------------------	--------------------------------	---------------------------	----------------------	----------



© IGI 2020, International Gemological Institute

FD - 10 20



THIS DOCUMENT WAS PRODUCED WITH THE FOLLOWING SECURITY MEASURES: SPECIAL DOCUMENT PAPER, INK SCREENS, WATERMARK, BACKGROUND DESIGNS, HOLOGRAM AND OTHER SECURITY FEATURES NOT LISTED AND DO EXCEED DOCUMENT SECURITY INDUSTRY GUIDELINES



IG

March 4, 2025	IGI Report No LG687557494	
ROUND BRILLIANT		
7.48 - 7.48 X 4.63 MM		
Carat Weight	1.55 CARAT	
Color Grade	D	
Clarity Grade	Vs1	
Cut Grade	IDEAL	
Depth	60.7%	
Table	65%	
Girdle	Medium To Slightly Thick (Faceted)	
Culet	Pointed	
Pavil	EXCELLENT	
Symmetry	EXCELLENT	
Fluorescence	NONE	
Inscription(s)	(68) LG687557494	
Comments:	This Laboratory Grown Diamond was created by Chemical Vapor Deposition (CVD) growth process.	
Type Iia		