



ELECTRONIC COPY

LABORATORY GROWN DIAMOND REPORT

| | |
|-------------------------|--------------------------|
| March 1, 2025 | |
| IGI Report Number | LG687589102 |
| Description | LABORATORY GROWN DIAMOND |
| Shape and Cutting Style | ROUND BRILLIANT |
| Measurements | 7.98 - 8.03 X 4.93 MM |

GRADING RESULTS

| | |
|---------------|------------|
| Carat Weight | 1.96 CARAT |
| Color Grade | E |
| Clarity Grade | VS 1 |
| Cut Grade | IDEAL |

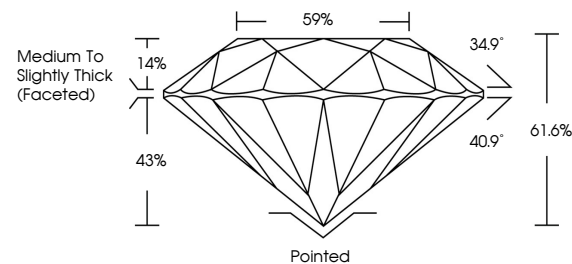
ADDITIONAL GRADING INFORMATION

| | |
|----------------|---|
| Polish | EXCELLENT |
| Symmetry | EXCELLENT |
| Fluorescence | NONE |
| Inscription(s) |  LG687589102 |

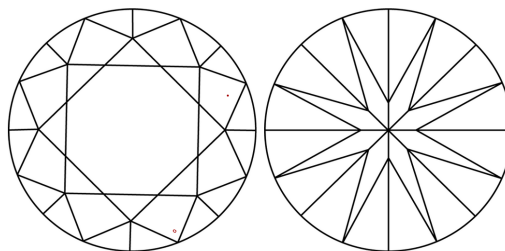
Comments: This Laboratory Grown Diamond was created by Chemical Vapor Deposition (CVD) growth process.
Type IIa

LG687589102
Report verification at igi.org

PROPORTIONS

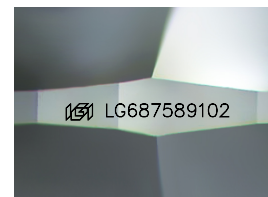


CLARITY CHARACTERISTICS



KEY TO SYMBOLS

Red symbols indicate internal characteristics.
Green symbols indicate external characteristics.



Sample Image Used

COLOR

D E F G H I J Faint Very Light Light

CLARITY

IF WS¹⁻² VS¹⁻² SI¹⁻² |¹⁻³

| | | | | |
|------------------------|--------------------------------|---------------------------|----------------------|----------|
| Internally Flawless | Very Very Slightly Included | Very Slightly Included | Slightly Included | Included |
|------------------------|--------------------------------|---------------------------|----------------------|----------|

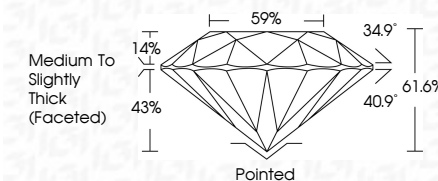
LABORATORY GROWN DIAMOND REPORT



| | |
|-------------------------|--------------------------|
| March 1, 2025 | |
| IGI Report Number | LG687589102 |
| Description | LABORATORY GROWN DIAMOND |
| Shape and Cutting Style | ROUND BRILLIANT |
| Measurements | 7.98 - 8.03 X 4.93 MM |

GRADING RESULTS

| | |
|---------------|------------|
| Carat Weight | 1.96 CARAT |
| Color Grade | E |
| Clarity Grade | VS 1 |
| Cut Grade | IDEAL |



ADDITIONAL GRADING INFORMATION

| | |
|---|---|
| Polish | EXCELLENT |
| Symmetry | EXCELLENT |
| Fluorescence | NONE |
| Inscription(s) |  LG687589102 |
| <p>Comments: This Laboratory Grown Diamond was created by Chemical Vapor Deposition (CVD) growth process.</p> <p>Type IIa</p> | |



© IGI 2020, International Gemological Institute

FD - 10 20

www.igi.org



THIS DOCUMENT WAS PRODUCED WITH THE FOLLOWING SECURITY MEASURES: SPECIAL DOCUMENT PAPER, INK SCREENS, WATERMARK, BACKGROUND DESIGNS, HOLOGRAM AND OTHER SECURITY FEATURES NOT LISTED AND DO EXCEED DOCUMENT SECURITY INDUSTRY GUIDELINE

| | | | | | | | | | | | | | | | | | | | | | | | | | | |
|----------------|---------------------------|--------------|-------------|---------------|-----------|-------|-------|--------|-------|--|-------|--|-----|--|----------------------------------|--|--------|--|-----------|--|-----------|--|------|--|-----------------|--|
| March 1, 2025 | GJ Report No. L6467597102 | | 1.9% CABAT | | E | | VS 1 | | IDEAL | | 61.6% | | 59% | | Medium to Slightly Thick (faced) | | Ported | | EXCELLENT | | EXCELLENT | | NONE | | 499 L6467597102 | |
| ROUND BRILLANT | 9.98 - 6.03 X 4.93 MM | Carat Weight | Color Grade | Clarity Grade | Cut Grade | Depth | Table | Girdle | | | | | | | | | | | | | | | | | | |
| | | | | | | | | | | | | | | | | | | | | | | | | | | |

Comments:
 Sent to Gemvara Diamond was
 created by Gemvara Vapor
 (VD) good process.
 Type IIG