

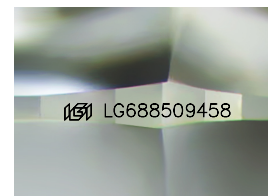
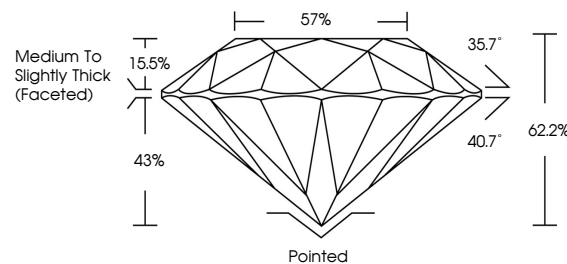


ELECTRONIC COPY

LABORATORY GROWN DIAMOND REPORT

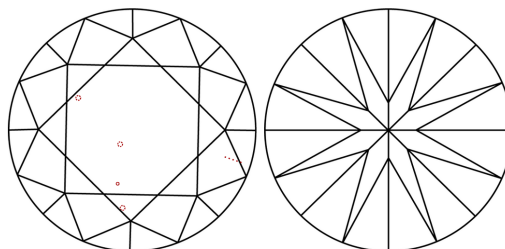
LG688509458
Report verification at igi.org

PROPORTIONS



Sample Image Used

CLARITY CHARACTERISTICS



KEY TO SYMBOLS

Red symbols indicate internal characteristics.
Green symbols indicate external characteristics.

COLOR

D E F G H I J Faint Very Light Light

CLARITY

IF WS¹⁻² VS¹⁻² SI¹⁻² |¹⁻³

Internally Flawless	Very Very Slightly Included	Very Slightly Included	Slightly Included	Included
------------------------	--------------------------------	---------------------------	----------------------	----------

LABORATORY GROWN DIAMOND REPORT



March 5, 2025

IGI Report Number **LG688509458**Description **LABORATORY GROWN DIAMOND**Shape and Cutting Style **ROUND BRILLIANT**

Measurements 8.14 - 8.19 X 5.08 MM

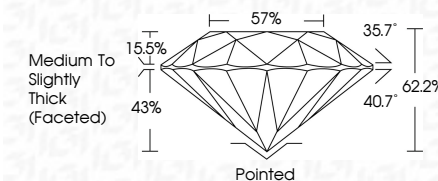
GRADING RESULTS

Carat Weight **2.09 CARATS**

Color Grade D

Clarity Grade VS 1

Cut Grade **IDEAL**



ADDITIONAL GRADING INFORMATION

Polish **EXCELLENT**Symmetry **EXCELLENT**Fluorescence **NONE**Inscription(s)  LG688509458

Comments: This Laboratory Grown Diamond was created by Chemical Vapor Deposition (CVD) growth process.
Type IIa



© IGI 2020, International Gemological Institute

FD - 10 20

www.igi.org



THIS DOCUMENT WAS PRODUCED WITH THE FOLLOWING SECURITY MEASURES: SPECIAL DOCUMENT PAPER, INK SCREENS, WATERMARK, BACKGROUND DESIGNS, HOLOGRAM AND OTHER SECURITY FEATURES NOT LISTED AND DO EXCEED DOCUMENT SECURITY INDUSTRY GUIDELINE

March 5, 2025	GI Report No. LG588509458	2109 CARATS	D	VS 1	IDEAL	62.2%	57%	Medium to Slightly Thick (Faceted)	Polished	EXCELLENT	EXCELLENT	NONE	1691 LG588509458
ROUND BRILLIANT	Carat Weight	Color Grade	Clarity Grade	Depth	Table	Girdle			Culet	Polish	Symmetry	Fluorescence	Inscriptions(s)
	1.14 - 1.19 X 0.68 MM												

Comments:
 Created by Chemist Diamond was
 treated by Chemical Vapor Deposition
 (CVD) growth process.
 Type IIG