



ELECTRONIC COPY

LG689523376
Report verification at igi.org



March 26, 2025
IGI Report Number **LG689523376**
Description **LABORATORY GROWN DIAMOND**
Shape and Cutting Style **CUSHION MODIFIED BRILLIANT**
Measurements **12.32 X 9.41 X 6.55 MM**
GRADING RESULTS
Carat Weight **5.70 CARATS**
Color Grade **FANCY VIVID PINK**
Clarity Grade **VS 2**

LABORATORY GROWN DIAMOND REPORT

March 26, 2025
IGI Report Number **LG689523376**
Description **LABORATORY GROWN DIAMOND**
Shape and Cutting Style **CUSHION MODIFIED BRILLIANT**
Measurements **12.32 X 9.41 X 6.55 MM**

GRADING RESULTS

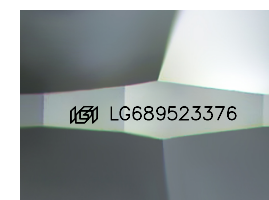
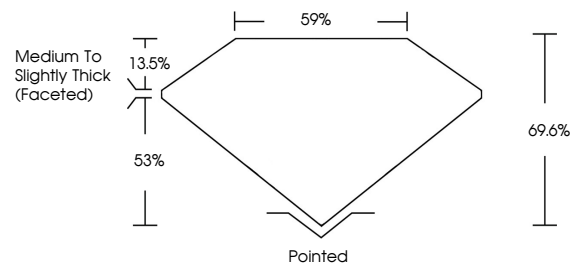
Carat Weight **5.70 CARATS**
Color Grade **FANCY VIVID PINK**
Clarity Grade **VS 2**

ADDITIONAL GRADING INFORMATION

Polish **EXCELLENT**
Symmetry **EXCELLENT**
Fluorescence **SLIGHT**
Inscription(s) **LG689523376**

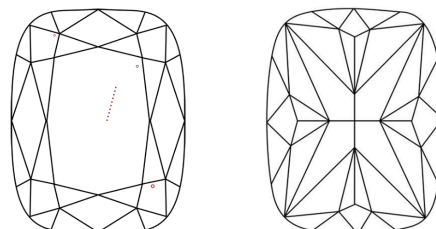
Comments: This Laboratory Grown Diamond was created by Chemical Vapor Deposition (CVD) growth process. Indications of post-growth treatment.

PROPORTIONS



Sample Image Used

CLARITY CHARACTERISTICS



KEY TO SYMBOLS

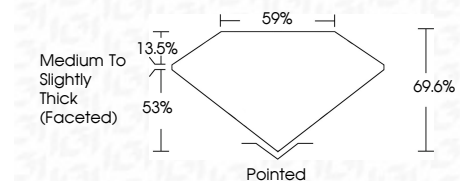
Red symbols indicate internal characteristics.
Green symbols indicate external characteristics.

COLOR

D E F G H I J Faint Very Light Light

CLARITY

IF	VS ¹⁻²	VS ¹⁻²	SI ¹⁻²	I ¹⁻³
Internally Flawless	Very Very Slightly Included	Very Slightly Included	Slightly Included	Included



ADDITIONAL GRADING INFORMATION

Polish **EXCELLENT**
Symmetry **EXCELLENT**
Fluorescence **SLIGHT**
Inscription(s) **LG689523376**
Comments: This Laboratory Grown Diamond was created by Chemical Vapor Deposition (CVD) growth process. Indications of post-growth treatment.



March 26, 2025
IGI Report No **LG689523376**
CUSHION MODIFIED BRILLIANT
5.70 CARATS
Carat Weight **FANCY VIVID PINK**
Color Grade **VS 2**
Clarity Grade **69.6%**
Depth **53%**
Table **Medium to Slightly Thick (Faceted)**
Girdle **Pointed**
Culet **EXCELLENT**
Polish **EXCELLENT**
Symmetry **EXCELLENT**
Fluorescence **SLIGHT**
Inscription(s) **LG689523376**
Comments: This Laboratory Grown Diamond was created by Chemical Vapor Deposition (CVD) growth process. Indications of post-growth treatment.