

**ELECTRONIC COPY**

## LABORATORY GROWN DIAMOND REPORT

March 12, 2025	
IGI Report Number	LG689538560
Description	LABORATORY GROWN DIAMOND
Shape and Cutting Style	ROUND BRILLIANT
Measurements	8.73 - 8.76 X 5.37 MM

## GRADING RESULTS

Carat Weight	2.53 CARATS
Color Grade	E
Clarity Grade	VVS 2
Cut Grade	IDEAL

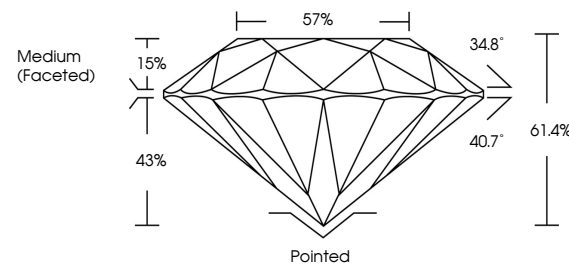
### ADDITIONAL GRADING INFORMATION

Polish	EXCELLENT
Symmetry	EXCELLENT
Fluorescence	NONE
Inscription(s)	 LG689538560

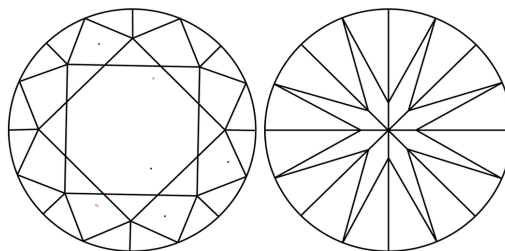
Comments: This Laboratory Grown Diamond was created by Chemical Vapor Deposition (CVD) growth process.  
Type IIa

LG689538560  
Report verification at [igi.org](https://igi.org)

## PROPORTIONS

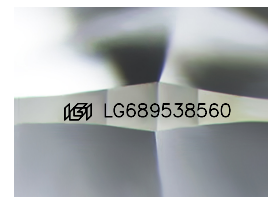


## CLARITY CHARACTERISTICS



## KEY TO SYMBOLS

Red symbols indicate internal characteristics.  
Green symbols indicate external characteristics.



Sample Image Used

**COLOR**

D E F G H I J Faint Very Light Light

## CLARITY

IF VS<sup>1-2</sup> VS<sup>1-2</sup> SI<sup>1-2</sup> 1-3

Internally Flawless	Very Very Slightly Included	Very Slightly Included	Slightly Included	Included
------------------------	--------------------------------	---------------------------	----------------------	----------

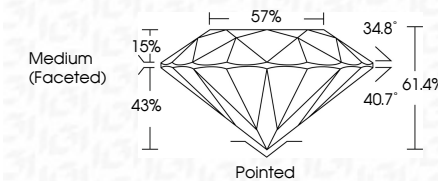
## LABORATORY GROWN DIAMOND REPORT



March 12, 2025	
IGI Report Number	LG689538560
Description	LABORATORY GROWN DIAMOND
Shape and Cutting Style	ROUND BRILLIANT
Measurements	8.73 - 8.76 X 5.37 MM

## GRADING RESULTS

Carat Weight	2.53 CARATS
Color Grade	E
Clarity Grade	VVS 2
Cut Grade	IDEAL



### ADDITIONAL GRADING INFORMATION

Polish	EXCELLENT
Symmetry	EXCELLENT
Fluorescence	NONE
Inscription(s)	 LG689538560
<p>Comments: This Laboratory Grown Diamond was created by Chemical Vapor Deposition (CVD) growth process.</p> <p>Type IIa</p>	



IG



© IGI 2020, International Gemological Institute

FD - 10 20

March 12, 2025	2.53 CARATS	
GJ Report No. GJ69638560	E	
ROUND BRILLIANT	VVS 2	
	IDEAL	
	61.6%	
	57%	
	Medium (Faceted)	
	Pointed	
	EXCELLENT	
	EXCELLENT	
	NONE	
	161 LG69638560	

Comments:  
 This is a Natural, Gemmy Diamond was  
 created by Chemical Vapor Deposition  
 (CVD) growth process.  
 Type IIa