

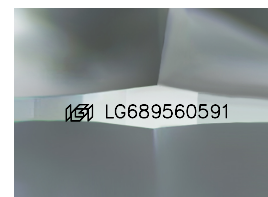
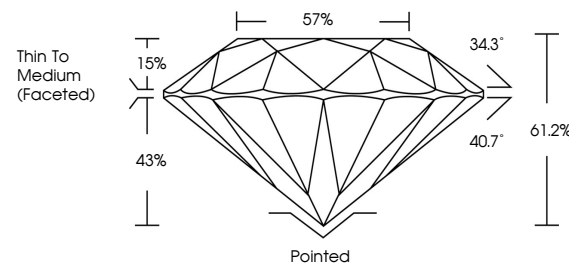


ELECTRONIC COPY

LABORATORY GROWN DIAMOND REPORT

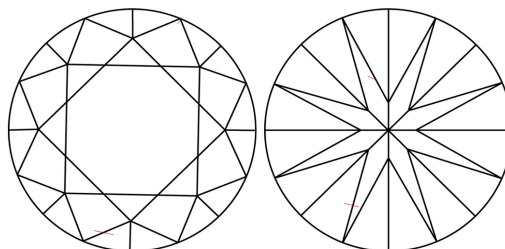
LG689560591
Report verification at igi.org

PROPORTIONS



Sample Image Used

CLARITY CHARACTERISTICS



KEY TO SYMBOLS

Red symbols indicate internal characteristics.
Green symbols indicate external characteristics.

COLOR

D E F G H I J Faint Very Light Light

CLARITY

IF WS¹⁻² VS¹⁻² SI¹⁻² |¹⁻³

Internally Flawless	Very Very Slightly Included	Very Slightly Included	Slightly Included	Included
------------------------	--------------------------------	---------------------------	----------------------	----------



© IGI 2020, International Gemological Institute

FD - 10 20

www.igi.org

LABORATORY GROWN DIAMOND REPORT



May 12, 2025

IGI Report Number **LG689560591**Description **LABORATORY GROWN DIAMOND**Shape and Cutting Style **ROUND BRILLIANT**

Measurements 6.42 - 6.46 X 3.94 MM

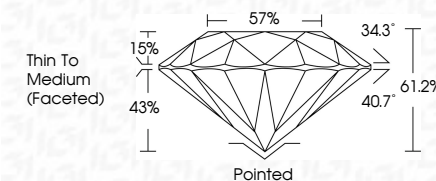
GRADING RESULTS

Carat Weight 1.00 CARAT

Color Grade

Clarity Grade VS 2

Cut Grade **IDEAL**



ADDITIONAL GRADING INFORMATION

Polish **EXCELLENT**Symmetry **EXCELLENT**Fluorescence **NONE**Inscription(s) LG689560591

Comments: As Grown - No indication of post-growth treatment.

This Laboratory Grown Diamond was created by High Pressure High Temperature (HPHT) growth process.

Type II



May 12, 2025	10.00 CARAT	V8 2	61.2%	57%	Thin To Medium (graded)	Ported	EXCELLENT	EXCELLENT	NONE	16J LG58950591	Comments: As Grown - No Indication of post-growth treatment.
Report No: LG58950591	Color Grade	Clarity Grade	Cut Grade	Depth	Gtable	Table	Polish	Symmetry	Fluorescence		This Laboratory Grown Diamond was created by high pressure high temperature (HPHT) growth process. Type II