

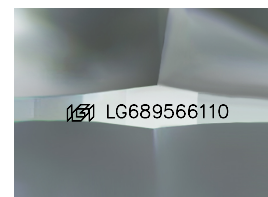
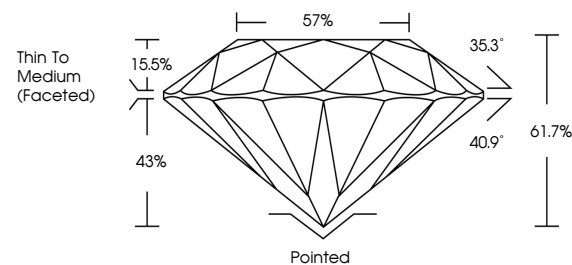


ELECTRONIC COPY

LABORATORY GROWN DIAMOND REPORT

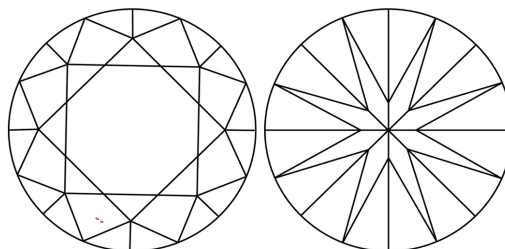
LG689566110
Report verification at igi.org

PROPORTIONS



Sample Image Used

CLARITY CHARACTERISTICS



KEY TO SYMBOLS

Red symbols indicate internal characteristics.
Green symbols indicate external characteristics.

COLOR

D E F G H I J Faint Very Light Light

CLARITY

IF VS¹⁻² VS¹⁻² SI¹⁻² I¹⁻³

Internally Flawless	Very Very Slightly Included	Very Slightly Included	Slightly Included	Included
------------------------	--------------------------------	---------------------------	----------------------	----------

LABORATORY GROWN DIAMOND REPORT



April 11, 2025

IGI Report Number **LG689566110**Description **LABORATORY GROWN DIAMOND**Shape and Cutting Style **ROUND BRILLIANT**

Measurements	8.16 - 8.21 X 5.05 MM
--------------	-----------------------

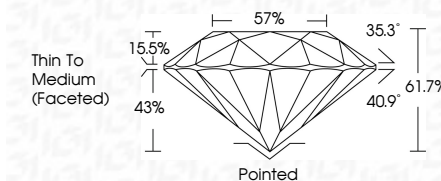
GRADING RESULTS

Carat Weight **2.07 CARATS**

Color Grade	D
-------------	---

Clarity Grade **VVS 2**

Cut Grade **IDEAL**



ADDITIONAL GRADING INFORMATION

Polish **EXCELLENT**Symmetry **EXCELLENT**

Fluorescence NONI

Inscription(s) LG689566110

Comments: As Grown - No indication of post-growth treatment.

This Laboratory Grown Diamond was created by High Pressure High Temperature (HPHT) growth process.

Type II



© IGI 2020, International Gemological Institute

FD - 10 20

www.igi.org



THIS DOCUMENT WAS PRODUCED WITH THE FOLLOWING SECURITY MEASURES: SPECIAL DOCUMENT PAPER, INK SCREENS, WATERMARK, BACKGROUND DESIGNS, HOLOGRAM AND OTHER SECURITY FEATURES NOT LISTED AND DO EXCEED DOCUMENT SECURITY INDUSTRY GUIDELINES

April 11, 2025	Report No. US69566110	2.07 CARATS	D	VW6 2	57%	Thin To Medium (faced)	Ported	EXCELLENT	EXCELLENT	NONE	#61US69566110	<p>Comments:</p> <p>As Grown - No indication of post-growth treatment.</p> <p>The Laboratory Grown Diamond was created by high pressure high temperature (HPHT) growth process.</p> <p>Type II</p>
ROUND BRILLIANT	16.16 - 16.21 X 5.05 MM	Color Grade	Clarity Grade	Carat Weight	Depth	Table	Girdle	Symmetry	Fluorescence	Annotations		