

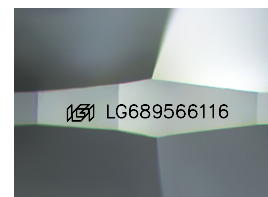
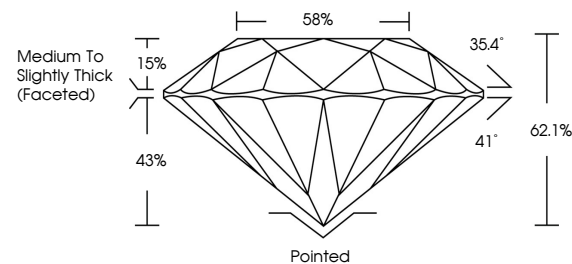


**ELECTRONIC COPY**

## LABORATORY GROWN DIAMOND REPORT

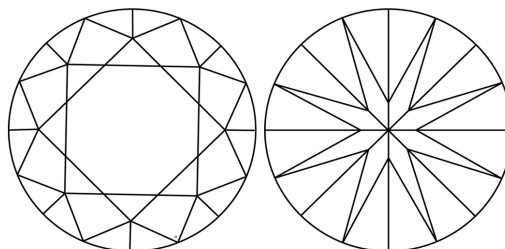
LG689566116  
Report verification at [lgi.org](https://lgi.org)

## PROPORTIONS



Sample Image Used

## CLARITY CHARACTERISTICS



### KEY TO SYMBOLS

Red symbols indicate internal characteristics.  
Green symbols indicate external characteristics.

## COLOR

D E F G H I J Faint Very Light Light

## CLARITY

IF WS<sup>1-2</sup> VS<sup>1-2</sup> S<sup>1-2</sup> |<sup>1-3</sup>

Internally Flawless	Very Very Slightly Included	Very Slightly Included	Slightly Included	Included
------------------------	--------------------------------	---------------------------	----------------------	----------

## LABORATORY GROWN DIAMOND REPORT



April 11, 2025

IGI Report Number **LG689566116**Description **LABORATORY GROWN DIAMOND**Shape and Cutting Style **ROUND BRILLIANT**

Measurements 7.33 - 7.38 X 4.56 MM

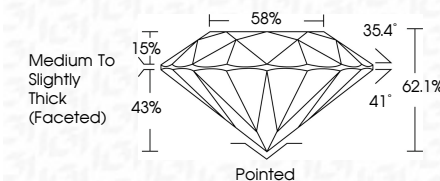
## GRADING RESULTS

Carat Weight **1.52 CARAT**

Color Grade D

Clarity Grade **VVS 2**

Cut Grade **IDEAL**



### ADDITIONAL GRADING INFORMATION

Polish **EXCELLENT**Symmetry **EXCELLENT**

Fluorescence NONI

Inscription(s)  LG689566116

Comments: As Grown - No indication of post-growth treatment.

This Laboratory Grown Diamond was created by High Pressure High Temperature (HPHT) growth process.

Type II



© IGI 2020, International Gemological Institute

FD - 10 20

**www.igi.org**



THIS DOCUMENT WAS PRODUCED WITH THE FOLLOWING SECURITY MEASURES: SPECIAL DOCUMENT PAPER, INK SCREENS, WATERMARK, BACKGROUND DESIGNS, HOLOGRAM, AND OTHER SECURITY FEATURES NOT LISTED AND DO EXCEED DOCUMENT SECURITY INDUSTRY GUIDELINES.

April 11, 2025	IGI Report No. US689660116	1.62 CARAT	VS2	62 %	Ported	EXCELLENT	NONE	As Grown - No indication of post-growth treatment.
ROUND BRILLIANT	3.58 x 3.58 x 4.50 MM	Color: Light	Clarity: Grade	Depth: 62 %	Medium to Slightly Thick (Faceted)	EXCELLENT	NONE	The Laboratory Grown Diamond was created by high pressure high temperature (HPHT) growth process.
		Color Grade	Cut Grade	Table		Symmetry	Fluorescence (Reaction(s))	Type II