



**ELECTRONIC COPY**

LG689579240  
Report verification at igi.org



April 3, 2025

IGI Report Number **LG689579240**

Description **LABORATORY GROWN DIAMOND**

Shape and Cutting Style **CUT CORNERED  
RECTANGULAR MODIFIED  
BRILLIANT**

Measurements **11.05 X 7.35 X 5.11 MM**

**GRADING RESULTS**

Carat Weight **4.02 CARATS**

Color Grade **FANCY VIVID YELLOW**

Clarity Grade **VS 2**

April 3, 2025

IGI Report Number **LG689579240**

Description **LABORATORY GROWN DIAMOND**

Shape and Cutting Style **CUT CORNERED RECTANGULAR  
MODIFIED BRILLIANT**

Measurements **11.05 X 7.35 X 5.11 MM**

**GRADING RESULTS**

Carat Weight **4.02 CARATS**

Color Grade **FANCY VIVID YELLOW**

Clarity Grade **VS 2**

**ADDITIONAL GRADING INFORMATION**

Polish **EXCELLENT**

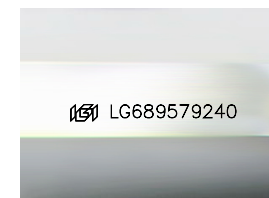
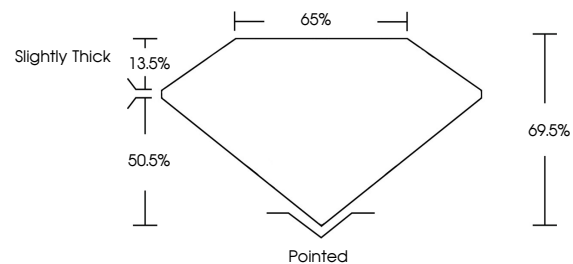
Symmetry **EXCELLENT**

Fluorescence **NONE**

Inscription(s) **IGI LG689579240**

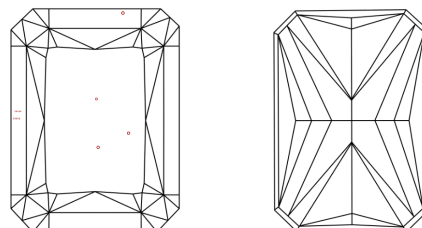
Comments: This Laboratory Grown Diamond was created by Chemical Vapor Deposition (CVD) growth process.

**PROPORTIONS**



Sample Image Used

**CLARITY CHARACTERISTICS**



**KEY TO SYMBOLS**

Red symbols indicate internal characteristics.  
Green symbols indicate external characteristics.

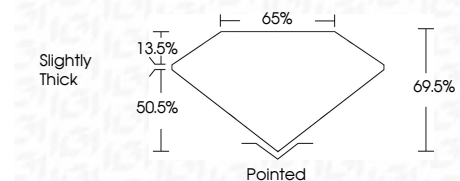
**COLOR**

D E F G H I J Faint Very Light Light

**CLARITY**

IF WS<sup>1-2</sup> VS<sup>1-2</sup> SI<sup>1-2</sup> I<sup>1-3</sup>

Internally Flawless Very Very Slightly Included Very Slightly Included Slightly Included Included



**ADDITIONAL GRADING INFORMATION**

Polish **EXCELLENT**

Symmetry **EXCELLENT**

Fluorescence **NONE**

Inscription(s) **IGI LG689579240**

Comments: This Laboratory Grown Diamond was created by Chemical Vapor Deposition (CVD) growth process.



**IGI**



April 3, 2025  
IGI Report No. LG689579240  
CUT CORNERED RECT. MODIFIED BRILLIANT

4.02 CARATS  
Carat Weight  
FANCY VIVID YELLOW  
Color Grade

VS 2  
Depth 69.5%  
Table 50.5%  
Girdle Slightly Thick

Pointed  
Culet  
EXCELLENT  
Polish  
EXCELLENT  
Symmetry  
NONE  
Fluorescence  
IGI LG689579240  
Inscription(s)

Comments: This Laboratory Grown Diamond was created by Chemical Vapor Deposition (CVD) growth process.