



689584517

DIAMOND REPORT

ELECTRONIC COPY



March 25, 2025
IGI Report Number 689584517
Description NATURAL DIAMOND
Shape and Cutting Style ROUND BRILLIANT
Measurements 6.57 - 6.61 x 4.08 mm

GRADING RESULTS

Carat Weight 1.10 CARAT
Color Grade G
Clarity Grade INTERNALLY FLAWLESS
Cut Grade EXCELLENT

March 25, 2025
IGI Report Number 689584517
Description NATURAL DIAMOND
Shape and Cutting Style ROUND BRILLIANT
Measurements 6.57 - 6.61 x 4.08 mm

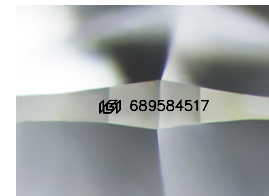
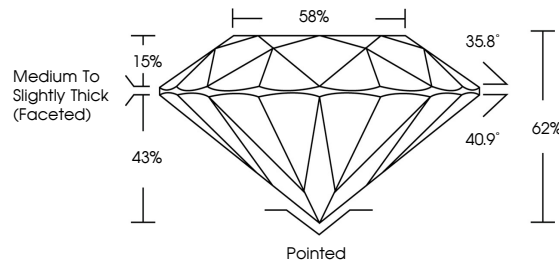
GRADING RESULTS

Carat Weight 1.10 CARAT
Color Grade G
Clarity Grade INTERNALLY FLAWLESS
Cut Grade EXCELLENT

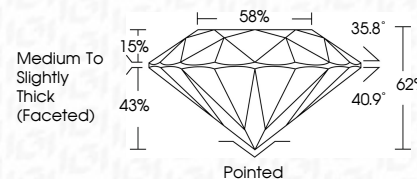
ADDITIONAL GRADING INFORMATION

Polish EXCELLENT
Symmetry EXCELLENT
Fluorescence NONE
Inscription(s) IGI 689584517
Comments: IDEAL CUT ROUND BRILLIANT

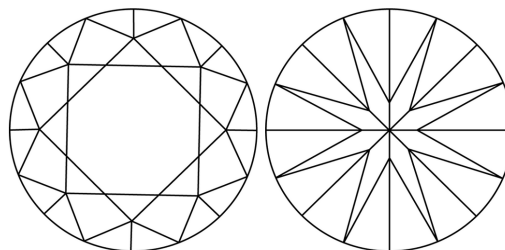
PROPORTIONS



Sample Image Used



CLARITY CHARACTERISTICS



COLOR

Table with 6 columns: D - F, G - J, K - M, N - R, S - Z, FANCY. Row 1: Colorless, Near Colorless, Slightly Tinted, Very Light Color, Light Color.

CLARITY

Table with 5 columns: IF, VS 1-2, VS 1-2, SI 1-2, I 1-3. Row 1: Internally Flawless, Very Very Slightly Included, Very Slightly Included, Slightly Included, Included.

ADDITIONAL GRADING INFORMATION

Polish EXCELLENT
Symmetry EXCELLENT
Fluorescence NONE
Inscription(s) IGI 689584517
Comments: IDEAL CUT ROUND BRILLIANT



KEY TO SYMBOLS

Red symbols indicate internal characteristics.
Green symbols indicate external characteristics.



IGI

March 25, 2025
IGI Report No. 689584517
NATURAL DIAMOND
ROUND BRILLIANT
6.57 - 6.61 x 4.08 mm
Carat Weight 1.10 CARAT
Color Grade G
Clarity Grade EXCELLENT
Cut Grade EXCELLENT
Depth 62%
Table 65%
Girdle Medium To Slightly Thick (Faceted)
Culet Pointed
Polish EXCELLENT
Symmetry EXCELLENT
Fluorescence NONE
Inscription(s) IGI 689584517
Comments: IDEAL CUT ROUND BRILLIANT