



**ELECTRONIC COPY**

LG690503650  
Report verification at igi.org

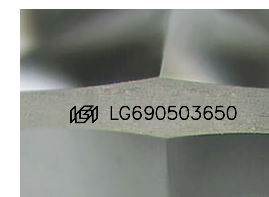
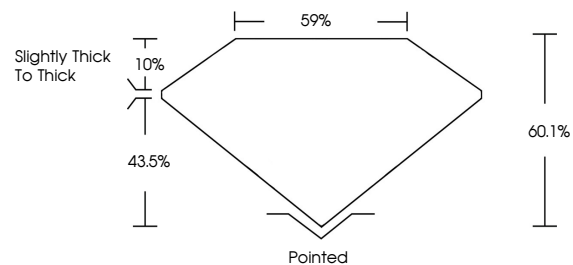
**LABORATORY GROWN DIAMOND REPORT**

March 20, 2025  
IGI Report Number **LG690503650**  
Description **LABORATORY GROWN DIAMOND**  
Shape and Cutting Style **PEAR MIXED CUT**  
Measurements **13.28 X 8.64 X 5.19 MM**  
**GRADING RESULTS**  
Carat Weight **3.47 CARATS**  
Color Grade **E**  
Clarity Grade **VS 1**

**ADDITIONAL GRADING INFORMATION**

Polish **EXCELLENT**  
Symmetry **EXCELLENT**  
Fluorescence **NONE**  
Inscription(s) **IGI LG690503650**  
Comments: This Laboratory Grown Diamond was created by Chemical Vapor Deposition (CVD) growth process.  
Type IIa

**PROPORTIONS**



Sample Image Used

**COLOR**

D E F G H I J Faint Very Light Light

**CLARITY**

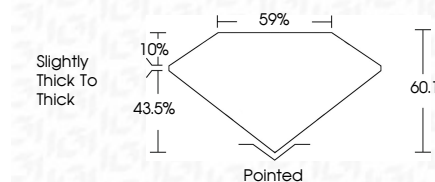
| IF                  | WS <sup>1-2</sup>           | VS <sup>1-2</sup>      | SI <sup>1-2</sup> | I <sup>1-3</sup> |
|---------------------|-----------------------------|------------------------|-------------------|------------------|
| Internally Flawless | Very Very Slightly Included | Very Slightly Included | Slightly Included | Included         |



March 20, 2025  
IGI Report Number **LG690503650**  
Description **LABORATORY GROWN DIAMOND**  
Shape and Cutting Style **PEAR MIXED CUT**  
Measurements **13.28 X 8.64 X 5.19 MM**  
**GRADING RESULTS**  
Carat Weight **3.47 CARATS**  
Color Grade **E**  
Clarity Grade **VS 1**

**ADDITIONAL GRADING INFORMATION**

Polish **EXCELLENT**  
Symmetry **EXCELLENT**  
Fluorescence **NONE**  
Inscription(s) **IGI LG690503650**  
Comments: This Laboratory Grown Diamond was created by Chemical Vapor Deposition (CVD) growth process.  
Type IIa



**IGI**



March 20, 2025  
IGI Report No **LG690503650**  
**PEAR MIXED CUT**  
Carat Weight **3.47 CARATS**  
Color Grade **E**  
Clarity Grade **VS 1**  
Table **60.1%**  
Depth **43.5%**  
Girdle **Slightly Thick To Thick**  
Culet **Pointed**  
Polish **EXCELLENT**  
Symmetry **EXCELLENT**  
Fluorescence **NONE**  
Inscription(s) **IGI LG690503650**  
Comments: This Laboratory Grown Diamond was created by Chemical Vapor Deposition (CVD) growth process.  
Type IIa