



**INTERNATIONAL
GEMOLOGICAL
INSTITUTE**

ELECTRONIC COPY

LG691502361
Report verification at igi.org

LABORATORY GROWN DIAMOND REPORT



March 17, 2025

IGI Report Number LG691502361

Description	LABORATORY GROWN DIAMOND
-------------	--------------------------

Shape and Cutting Style **ROUND BRILLIANT**

Measurements 7.04 - 7.08 X 4.38 MM

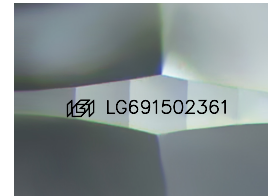
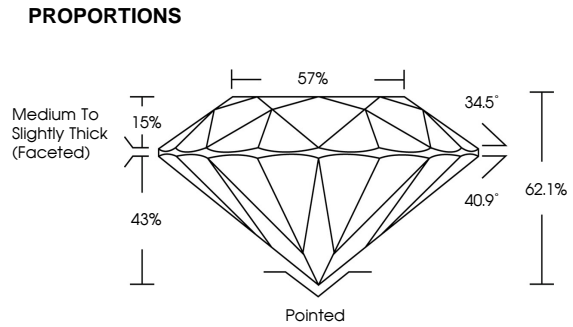
GRADING RESULTS

Carat Weight **1.35 CARAT**

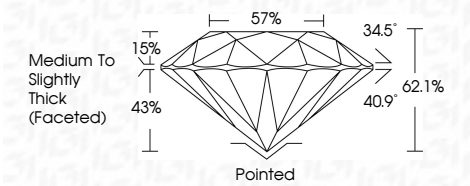
Color Grade	F
-------------	---

Clarity Grade VS 1

Cut Grade **IDEAL**



Sample Image Used



COLOR

D E F G H I J Faint Very Light Light

CLARITY

IF WS¹⁻² VS¹⁻² SI¹⁻² I¹⁻³

Internally Flawless	Very Very Slightly Included	Very Slightly Included	Slightly Included	Included
------------------------	--------------------------------	---------------------------	----------------------	----------



© IGI 2020, International Gemological Institute

FD - 10 20

www.igi.org



THIS DOCUMENT WAS PRODUCED WITH THE FOLLOWING SECURITY MEASURES: SPECIAL DOCUMENT PAPER, INK SCREENS, WATERMARK, BACKGROUND DESIGNS, HOLOGRAM AND OTHER SECURITY FEATURES NOT LISTED AND DO EXCEED DOCUMENT SECURITY INDUSTRY GUIDELINES



IGI

March 17, 2025	IGI Report No. IGG971502361	
ROUND BRILLIANT		
Carat Weight	Color Grade	Clarity Grade
1.35 CARAT F		
Color	Depth	Table
VS1 IDEAL	62.1%	
Medium to Slightly Thick Faceted		
Culet	Polish	Symmetry
Pointed		
EXCELLENT		
EXCELLENT		
NONE		
IGI LG971502361		
Comments: This Laboratory Grown Diamond was created by Chemical Vapor Deposition (CVD) growth process. Type IIa		