



ELECTRONIC COPY

LG691521453
Report verification at igi.org



September 26, 2025

IGI Report Number **LG691521453**

Description **LABORATORY GROWN DIAMOND**

Shape and Cutting Style **PRINCESS CUT**

Measurements **6.64 X 6.40 X 4.82 MM**

GRADING RESULTS

Carat Weight **1.88 CARAT**

Color Grade **E**

Clarity Grade **VVS 2**

September 26, 2025
IGI Report Number **LG691521453**
Description **LABORATORY GROWN DIAMOND**
Shape and Cutting Style **PRINCESS CUT**
Measurements **6.64 X 6.40 X 4.82 MM**

GRADING RESULTS

Carat Weight **1.88 CARAT**

Color Grade **E**

Clarity Grade **VVS 2**

ADDITIONAL GRADING INFORMATION

Polish **EXCELLENT**

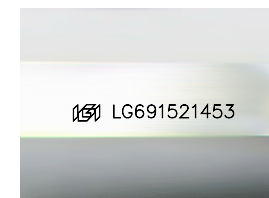
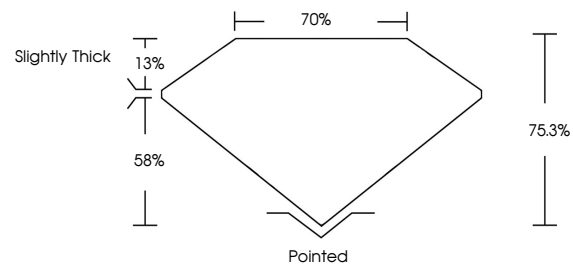
Symmetry **EXCELLENT**

Fluorescence **NONE**

Inscription(s) **IGI LG691521453**

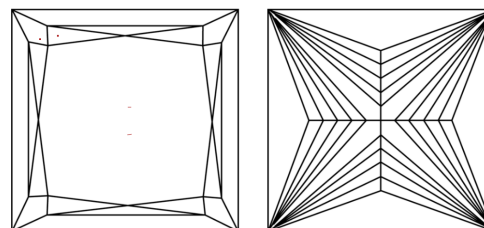
Comments: This Laboratory Grown Diamond was created by Chemical Vapor Deposition (CVD) growth process. Type IIa

PROPORTIONS



Sample Image Used

CLARITY CHARACTERISTICS



KEY TO SYMBOLS

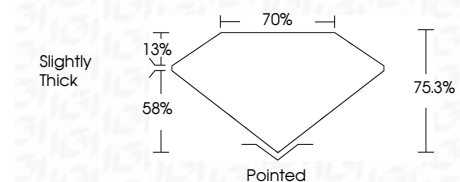
Red symbols indicate internal characteristics.
Green symbols indicate external characteristics.

COLOR

D E F G H I J Faint Very Light Light

CLARITY

IF	VS ¹⁻²	VS ¹⁻²	SI ¹⁻²	I ¹⁻³
Internally Flawless	Very Very Slightly Included	Very Slightly Included	Slightly Included	Included



ADDITIONAL GRADING INFORMATION

Polish **EXCELLENT**

Symmetry **EXCELLENT**

Fluorescence **NONE**

Inscription(s) **IGI LG691521453**

Comments: This Laboratory Grown Diamond was created by Chemical Vapor Deposition (CVD) growth process. Type IIa



IGI



September 26, 2025
IGI Report No. LG691521453
PRINCESS CUT
6.64 X 6.40 X 4.82 MM
1.88 CARAT
E
VVS 2
75.3%
70%
Slightly Thick
Pointed
EXCELLENT
EXCELLENT
NONE
IGI LG691521453
Comments: This Laboratory Grown Diamond was created by Chemical Vapor Deposition (CVD) growth process. Type IIa