



ELECTRONIC COPY

DIAMOND REPORT

April 9, 2025	
IGI Report Number	691554180
Description	NATURAL DIAMOND
Shape and Cutting Style	PRINCESS CUT
Measurements	5.20 X 5.19 X 4.02 MM

GRADING RESULTS

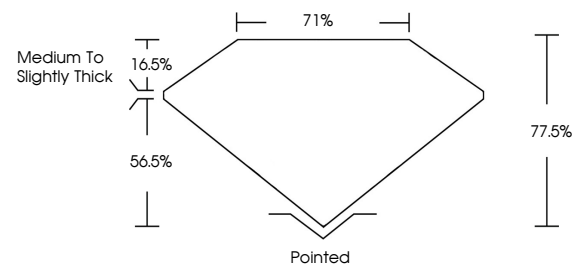
Carat Weight	1.01 CARAT
Color Grade	I
Clarity Grade	VVS 2
Cut Grade	VERY GOOD

ADDITIONAL GRADING INFORMATION

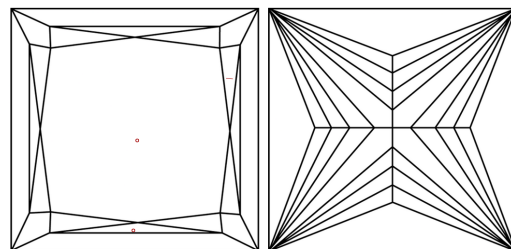
Polish	EXCELLENT
Symmetry	EXCELLENT
Fluorescence	VERY SLIGHT
Inscription(s)	131 691554180

691554180
Report verification at igi.org

PROPORTIONS

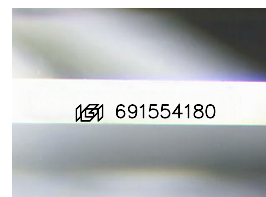


CLARITY CHARACTERISTICS



KEY TO SYMBOLS

Red symbols indicate internal characteristics.
Green symbols indicate external characteristics.



Sample Image Used

COLOR

D - F	G - J	K - M	N - R	S - Z	FANCY
Colorless	Near Colorless	Slightly Tinted	Very Light Color	Light Color	

CLARITY

IF	VVS ¹⁻²	VS ¹⁻²	SI ¹⁻²	I ¹⁻³
Internally Flawless	Very Very Slightly Included	Very Slightly Included	Slightly Included	Included

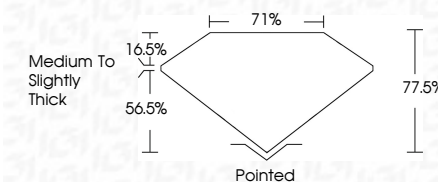
DIAMOND REPORT



April 9, 2025	
IGI Report Number	691554180
Description	NATURAL DIAMOND
Shape and Cutting Style	PRINCESS CUT
Measurements	5.20 X 5.19 X 4.02 MM

GRADING RESULTS

Carat Weight	1.01 CARAT
Color Grade	I
Clarity Grade	VVS 2
Cut Grade	VERY GOOD



ADDITIONAL GRADING INFORMATION

Polish	EXCELLENT
Symmetry	EXCELLENT
Fluorescence	VERY SLIGHT
Inscription(s)	1691554180



© IGI 2020, International Gemological Institute

FD - 10 20



THIS DOCUMENT WAS PRODUCED WITH THE FOLLOWING SECURITY MEASURES: SPECIAL DOCUMENT PAPER, INK SCREENS, WATERMARK, BACKGROUND DESIGNS, HOLOGRAM AND OTHER SECURITY FEATURES NOT LISTED AND DO EXCEED DOCUMENT SECURITY INDUSTRY GUIDELINES

www.igi.org

April 9, 2025
GI Report No 691554180
PRINCESS CIT

2.20 X 5.19 X 4.02 MM	Corat Weight	1.01 CARAT
	Color Grade	I
	Clarity Grade	VVS 2
	Cut Grade	VERY GOOD
	Depth	77.65%
	Table	71%
	Grade	Medium To Slightly Thick
	Culet	Pointed
	Polish	EXCELLENT
	Symmetry	EXCELLENT
	Fluorescence	VERY SLIGHT
	Measurements	2.20 X 5.19 X 4.02