



**ELECTRONIC COPY**

## LABORATORY GROWN DIAMOND REPORT

|                         |                          |
|-------------------------|--------------------------|
| March 18, 2025          |                          |
| IGI Report Number       | LG691560349              |
| Description             | LABORATORY GROWN DIAMOND |
| Shape and Cutting Style | EMERALD CUT              |
| Measurements            | 10.84 X 7.56 X 5.10 MM   |

## GRADING RESULTS

|               |             |
|---------------|-------------|
| Carat Weight  | 4.10 CARATS |
| Color Grade   | E           |
| Clarity Grade | VS 1        |

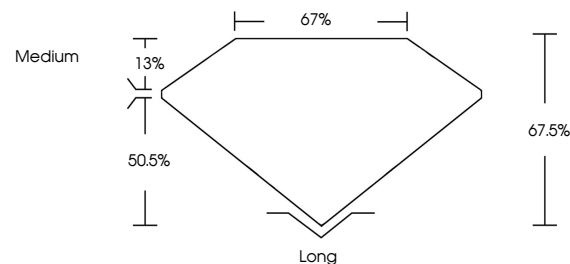
### ADDITIONAL GRADING INFORMATION

|                |                                                                                               |
|----------------|-----------------------------------------------------------------------------------------------|
| Polish         | EXCELLENT                                                                                     |
| Symmetry       | EXCELLENT                                                                                     |
| Fluorescence   | NONE                                                                                          |
| Inscription(s) |  LG691560349 |

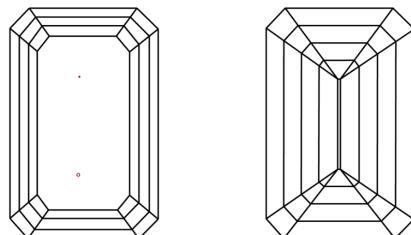
Comments: This Laboratory Grown Diamond was created by Chemical Vapor Deposition (CVD) growth process.  
Type IIa

LG691560349  
Report verification at [igi.org](https://igi.org)

## PROPORTIONS

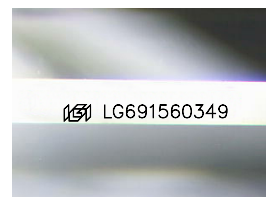


## CLARITY CHARACTERISTICS



## KEY TO SYMBOLS

Red symbols indicate internal characteristics.  
Green symbols indicate external characteristics.



Sample Image Used

## COLOR

D E F G H I J Faint Very Light Light

## CLARITY

IF      VWS<sup>1-2</sup>      VS<sup>1-2</sup>      SI<sup>1-2</sup>      I<sup>1-3</sup>

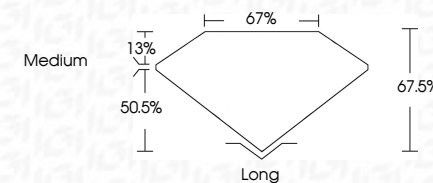
|                        |                                |                           |                      |          |
|------------------------|--------------------------------|---------------------------|----------------------|----------|
| Internally<br>Flawless | Very Very<br>Slightly Included | Very<br>Slightly Included | Slightly<br>Included | Included |
|------------------------|--------------------------------|---------------------------|----------------------|----------|



|                         |                          |
|-------------------------|--------------------------|
| March 18, 2025          |                          |
| IGI Report Number       | LG691560349              |
| Description             | LABORATORY GROWN DIAMOND |
| Shape and Cutting Style | EMERALD CUT              |
| Measurements            | 10.84 X 7.56 X 5.10 MM   |

## GRADING RESULTS

|               |             |
|---------------|-------------|
| Carat Weight  | 4.10 CARATS |
| Color Grade   | E           |
| Clarity Grade | VS 1        |



### ADDITIONAL GRADING INFORMATION

|                |                                                                                                 |
|----------------|-------------------------------------------------------------------------------------------------|
| Polish         | EXCELLENT                                                                                       |
| Symmetry       | EXCELLENT                                                                                       |
| Fluorescence   | NONE                                                                                            |
| Inscription(s) |  LG691560349 |

Comments: This Laboratory Grown Diamond was created by Chemical Vapor Deposition (CVD) growth process.  
Type IIa



**www.igi.org**

© IGI 2020, International Gemological Institute

FD - 10 20



THIS DOCUMENT WAS PRODUCED WITH THE FOLLOWING SECURITY MEASURES: SPECIAL DOCUMENT PAPER, INK SCREENS, WATERMARK, BACKGROUND DESIGNS, HOLOGRAM AND OTHER SECURITY FEATURES NOT LISTED AND DO EXCEED DOCUMENT SECURITY INDUSTRY GUIDELINES

March 18, 2025  
GI Report No LG691560349

|                        |             |       |        |           |      |
|------------------------|-------------|-------|--------|-----------|------|
| 10.64 X 7.55 X 5.10 MM | 4.10 CARATS | VS 1  | Long   | EXCELLENT | None |
| Color Grade            |             | 67.6% | Medium | EXCELLENT | None |
| Clarity Grade          |             | 67%   |        |           | None |
| Depth                  |             |       |        |           |      |
| Table                  |             |       |        |           |      |
| Grade                  |             |       |        |           |      |
| Culet                  |             |       |        |           |      |
| Polish                 |             |       |        |           |      |
| Symmetry               |             |       |        |           |      |
| Fluorescence           |             |       |        |           |      |

**Comments:**  
This Laboratory Grown Diamond was  
created by Chemical Vapor Deposition  
(CVD) growth process.