



ELECTRONIC COPY

LABORATORY GROWN DIAMOND REPORT

| | |
|-------------------------|--------------------------|
| March 19, 2025 | |
| IGI Report Number | LG692504084 |
| Description | LABORATORY GROWN DIAMOND |
| Shape and Cutting Style | ROUND BRILLIANT |
| Measurements | 9.37 - 9.44 X 5.62 MM |

GRADING RESULTS

| | |
|---------------|-------------|
| Carat Weight | 3.04 CARATS |
| Color Grade | D |
| Clarity Grade | VS 1 |
| Cut Grade | IDEAL |

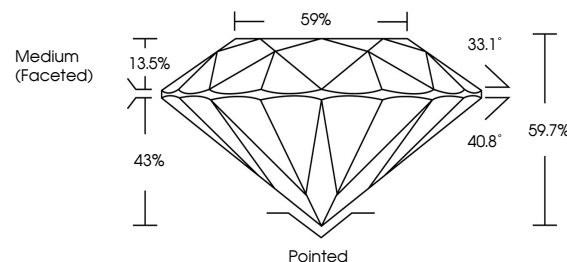
ADDITIONAL GRADING INFORMATION

| | |
|----------------|-----------------|
| Polish | EXCELLENT |
| Symmetry | EXCELLENT |
| Fluorescence | NONE |
| Inscription(s) | 151 LG692504084 |

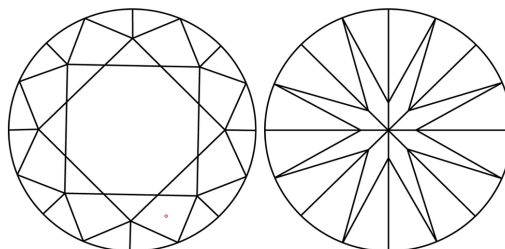
Comments: This Laboratory Grown Diamond was created by Chemical Vapor Deposition (CVD) growth process.
Type IIa

LG692504084
Report verification at lgi.org

PROPORTIONS

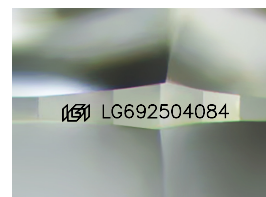


CLARITY CHARACTERISTICS



KEY TO SYMBOLS

Red symbols indicate internal characteristics.
Green symbols indicate external characteristics.



Sample Image Used

COLOR

D E F G H I J Faint Very Light Light

CLARITY

IF VS¹⁻² VS¹⁻² SI¹⁻² |¹⁻³

| | | | | |
|------------------------|--------------------------------|---------------------------|----------------------|----------|
| Internally Flawless | Very Very Slightly Included | Very Slightly Included | Slightly Included | Included |
|------------------------|--------------------------------|---------------------------|----------------------|----------|

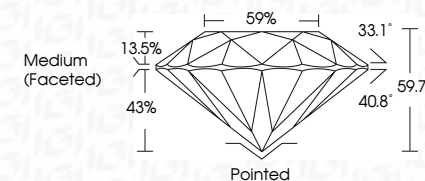
LABORATORY GROWN DIAMOND REPORT



| | |
|-------------------------|--------------------------|
| March 19, 2025 | |
| IGI Report Number | LG692504084 |
| Description | LABORATORY GROWN DIAMOND |
| Shape and Cutting Style | ROUND BRILLIANT |
| Measurements | 9.37 - 9.44 X 5.62 MM |

GRADING RESULTS

| | |
|---------------|-------------|
| Carat Weight | 3.04 CARATS |
| Color Grade | D |
| Clarity Grade | VS 1 |
| Cut Grade | IDEAL |



ADDITIONAL GRADING INFORMATION

| | |
|---|---|
| Polish | EXCELLENT |
| Symmetry | EXCELLENT |
| Fluorescence | NONE |
| Inscription(s) |  LG692504084 |
| <p>Comments: This Laboratory Grown Diamond was created by Chemical Vapor Deposition (CVD) growth process.</p> <p>Type IIa</p> | |



© IGI 2020, International Gemological Institute

FD - 10 20

www.igi.org

THIS DOCUMENT WAS PRODUCED WITH THE FOLLOWING SECURITY MEASURES: SPECIAL DOCUMENT PAPER, INK SCREENS, WATERMARK BACKGROUND DESIGNS, HOLOGRAM AND OTHER SECURITY FEATURES NOT LISTED AND DO EXCEED DOCUMENT SECURITY INDUSTRY GUIDELINES

March 19, 2025
GI Report No LG692504084
ROUND BRILLIANT

| | | | | |
|-----------------------|--------------|---------------|------------------|-------------|
| 3.37 - 9.44 X 5.62 MM | Color Grade | Clarity Grade | VS 1 | 3.04 CARATS |
| | Carat Weight | Cut Grade | IDEAL | |
| | Depth | Table | 89.7% | |
| | Girdle | | 59% | |
| | Culet | | Medium (Faceted) | |
| | Polish | | | |
| | Symmetry | | | |
| | Fluorescence | | | |
| | | | | Pointed |
| | | | | EXCELLENT |
| | | | | EXCELLENT |
| | | | | NONE |

Comments:
This Laboratory Grown Diamond was created by Chemical Vapor Deposition (CVD) growth process.