



ELECTRONIC COPY

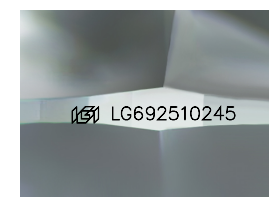
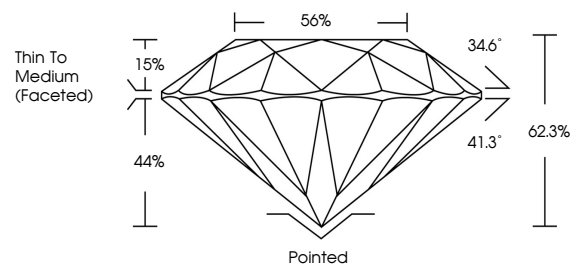
LG692510245
Report verification at igi.org



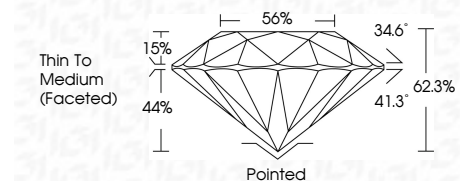
March 18, 2025
IGI Report Number LG692510245
Description LABORATORY GROWN DIAMOND
Shape and Cutting Style ROUND BRILLIANT
Measurements 6.58 - 6.62 X 4.11 MM
GRADING RESULTS
Carat Weight 1.09 CARAT
Color Grade E
Clarity Grade VVS 1
Cut Grade IDEAL

March 18, 2025
IGI Report Number LG692510245
Description LABORATORY GROWN DIAMOND
Shape and Cutting Style ROUND BRILLIANT
Measurements 6.58 - 6.62 X 4.11 MM

PROPORTIONS



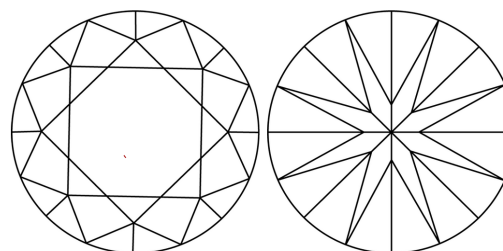
Sample Image Used



GRADING RESULTS

Carat Weight 1.09 CARAT
Color Grade E
Clarity Grade VVS 1
Cut Grade IDEAL

CLARITY CHARACTERISTICS



COLOR

D E F G H I J Faint Very Light Light

CLARITY

IF VVS 1-2 VS 1-2 SI 1-2 I 1-3
Internally Flawless Very Very Slightly Included Very Slightly Included Slightly Included Included

ADDITIONAL GRADING INFORMATION

Polish EXCELLENT
Symmetry EXCELLENT
Fluorescence NONE
Inscription(s) LG692510245

KEY TO SYMBOLS

Red symbols indicate internal characteristics.
Green symbols indicate external characteristics.

ADDITIONAL GRADING INFORMATION

Polish EXCELLENT
Symmetry EXCELLENT
Fluorescence NONE
Inscription(s) LG692510245
Comments: As Grown - No indication of post-growth treatment.
This Laboratory Grown Diamond was created by High Pressure High Temperature (HPHT) growth process.
Type II

Comments: As Grown - No indication of post-growth treatment.
This Laboratory Grown Diamond was created by High Pressure High Temperature (HPHT) growth process.
Type II



March 18, 2025
IGI Report No LG692510245
ROUND BRILLIANT
6.58 - 6.62 X 4.11 MM
1.09 CARAT E
VVS 1 IDEAL
62.3% 56%
Thin To Medium (Faceted)
Pointed EXCELLENT
Symmetry EXCELLENT
Fluorescence NONE
Inscriptions(s) IGI LG692510245
Comments: As Grown - No indication of post-growth treatment.
This Laboratory Grown Diamond was created by High Pressure High Temperature (HPHT) growth process.
Type II