



**ELECTRONIC COPY**

LG692516308  
Report verification at igi.org



March 29, 2025  
IGI Report Number **LG692516308**  
Description **LABORATORY GROWN DIAMOND**  
Shape and Cutting Style **PEAR ROSE CUT**  
Measurements **18.00 X 12.94 X 3.20 MM**  
**GRADING RESULTS**  
Carat Weight **6.96 CARATS**  
Color Grade **F**  
Clarity Grade **VS 1**

March 29, 2025  
IGI Report Number **LG692516308**  
Description **LABORATORY GROWN DIAMOND**  
Shape and Cutting Style **PEAR ROSE CUT**  
Measurements **18.00 X 12.94 X 3.20 MM**

**GRADING RESULTS**

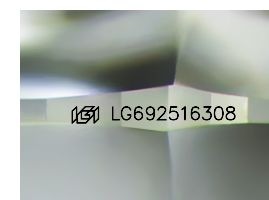
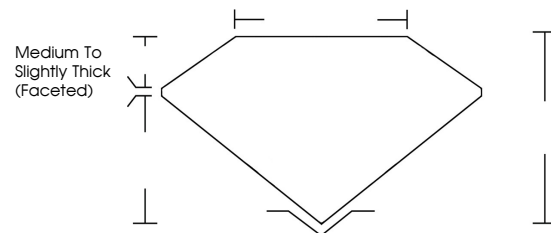
Carat Weight **6.96 CARATS**  
Color Grade **F**  
Clarity Grade **VS 1**

**ADDITIONAL GRADING INFORMATION**

Polish **EXCELLENT**  
Symmetry **VERY GOOD**  
Fluorescence **NONE**  
Inscription(s) **IGI LG692516308**

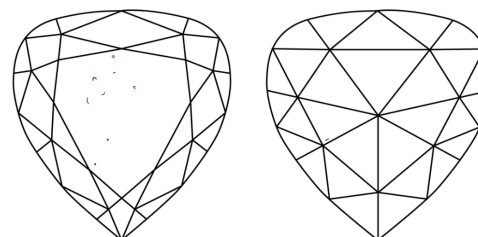
Comments: This Laboratory Grown Diamond was created by Chemical Vapor Deposition (CVD) growth process. Type IIa

**PROPORTIONS**



Sample Image Used

**CLARITY CHARACTERISTICS**



**KEY TO SYMBOLS**

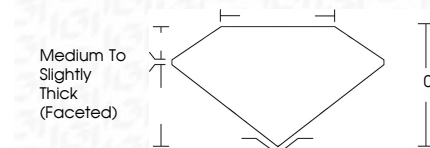
Red symbols indicate internal characteristics.  
Green symbols indicate external characteristics.

**COLOR**

D E F G H I J Faint Very Light Light

**CLARITY**

IF	VS <sup>1-2</sup>	VS <sup>1-2</sup>	SI <sup>1-2</sup>	I <sup>1-3</sup>
Internally Flawless	Very Very Slightly Included	Very Slightly Included	Slightly Included	Included



**ADDITIONAL GRADING INFORMATION**

Polish **EXCELLENT**  
Symmetry **VERY GOOD**  
Fluorescence **NONE**  
Inscription(s) **IGI LG692516308**  
Comments: This Laboratory Grown Diamond was created by Chemical Vapor Deposition (CVD) growth process. Type IIa



March 29, 2025  
IGI Report No LG692516308  
**PEAR ROSE CUT**  
18.00 X 12.94 X 3.20 MM  
6.96 CARATS  
F  
VS 1  
0%  
0%  
Medium to Slightly Thick (Faceted)  
EXCELLENT  
VERY GOOD  
NONE  
IGI LG692516308  
Comments: This Laboratory Grown Diamond was created by Chemical Vapor Deposition (CVD) growth process. Type IIa