



**INTERNATIONAL
GEMOLOGICAL
INSTITUTE**

ELECTRONIC COPY

LG692534372
Report verification at [igi.org](https://www.igi.org)

LABORATORY GROWN DIAMOND REPORT



March 23, 2025

IGI Report Number LG692534372

Description **LABORATORY GROWN DIAMOND**Shape and Cutting Style **ROUND BRILLIANT**

Measurements 9.21 - 9.30 X 5.49 MM

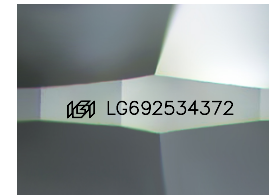
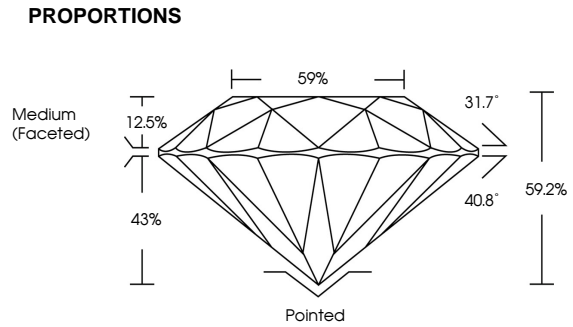
GRADING RESULTS

Carat Weight **2.86 CARATS**

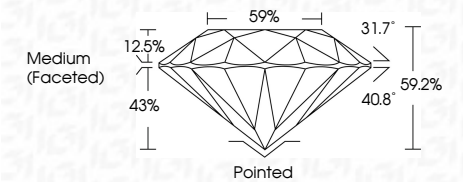
Color Grade	E
-------------	---

Clarity Grade VS 1

Cut Grade **EXCELLENT**



Sample Image Used



COLOR

D E F G H I J Faint Very Light Light

CLARITY

IF WS¹⁻² VS¹⁻² SI¹⁻² I¹⁻³

Internally Flawless	Very Very Slightly Included	Very Slightly Included	Slightly Included	Included
------------------------	--------------------------------	---------------------------	----------------------	----------



© IGI 2020, International Gemological Institute

FD - 10 20

www.igi.org

THIS DOCUMENT WAS PRODUCED WITH THE FOLLOWING SECURITY MEASURES: SPECIAL DOCUMENT PAPER, INK SCREENS, WATERMARK, BACKGROUND DESIGNS, HOLOGRAM AND OTHER SECURITY FEATURES NOT LISTED AND DO EXCEED DOCUMENT SECURITY INDUSTRY GUIDELINES



IGI

March 23, 2026	2.86 CARATS		VS 1 EXCELLENT 59.2% 59% Medium Faceted	Pointed EXCELLENT EXCELLENT NONE (gfr LG992534372)	Comments: This Laboratory Grown Diamond was created by Chemical Vapor Deposition (CVD) growth process. Type IIa
IG Report No. LG992534372					
ROUND BRILLIANT					
9.21 - 9.30 X 6.90 MM					
Carat Weight					
Color Grade	E				
Clarity Grade					
Curf Grade					
Depth					
Table					
Girdle					
Culet					
Polish					
Symmetry					
Fluorescence					
Inscription(s)					