



ELECTRONIC COPY

LABORATORY GROWN DIAMOND REPORT

April 15, 2025	
IGI Report Number	LG692547922
Description	LABORATORY GROWN DIAMOND
Shape and Cutting Style	ROUND MIXED CUT
Measurements	7.95 - 7.95 X 4.76 MM

GRADING RESULTS

Carat Weight	2.14 CARATS
Color Grade	FANCY INTENSE BLUE
Clarity Grade	VVS 2

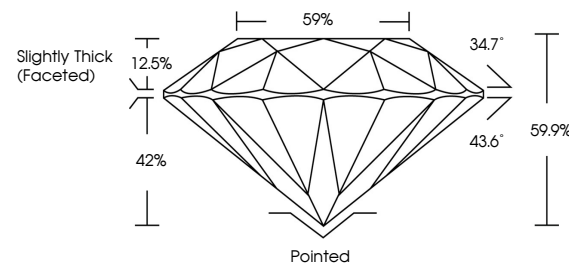
ADDITIONAL GRADING INFORMATION

Polish	EXCELLENT
Symmetry	EXCELLENT
Fluorescence	NONE
Inscription(s)	 LG692547922

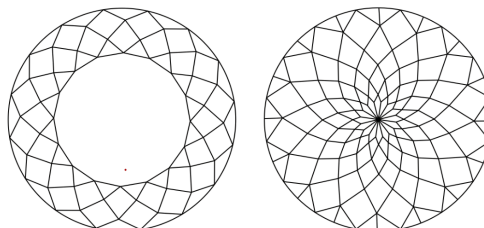
Comments: This Laboratory Grown Diamond was created by Chemical Vapor Deposition (CVD) growth process.
Indications of post-growth treatment.

LG692547922
Report verification at igi.org

PROPORTIONS

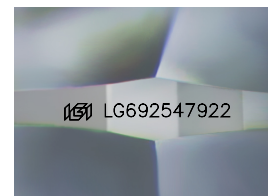


CLARITY CHARACTERISTICS



KEY TO SYMBOLS

Red symbols indicate internal characteristics.
Green symbols indicate external characteristics.



Sample Image Used

COLOR

D E F G H I J Faint Very Light Light

CLARITY

IF WS¹⁻² VS¹⁻² SI¹⁻² I¹⁻³

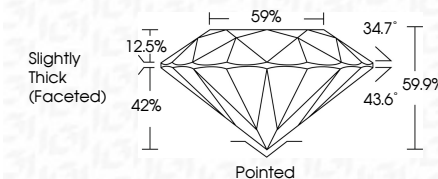
Internally Flawless	Very Very Slightly Included	Very Slightly Included	Slightly Included	Included
------------------------	--------------------------------	---------------------------	----------------------	----------



April 15, 2025	
IGI Report Number	LG692547922
Description	LABORATORY GROWN DIAMOND
Shape and Cutting Style	ROUND MIXED CUT
Measurements	7.95 - 7.95 X 4.76 MM

GRADING RESULTS

Carat Weight	2.14 CARATS
Color Grade	FANCY INTENSE BLUE
Clarity Grade	VVS 2



ADDITIONAL GRADING INFORMATION

Polish	EXCELLENT
Symmetry	EXCELLENT
Fluorescence	NONE
Inscription(s)	 LG-692547922

Comments: This Laboratory Grown Diamond was created by Chemical Vapor Deposition (CVD) growth process.
Indications of post-growth treatment.



© IGI 2020, International Gemological Institute

FD - 10 20

www.igi.org

THIS DOCUMENT WAS PRODUCED WITH THE FOLLOWING SECURITY MEASURES: SPECIAL DOCUMENT PAPER, INK SCREENS, WATERMARK BACKGROUND DESIGNS, HOLOGRAM AND OTHER SECURITY FEATURES NOT LISTED AND DO EXCEED DOCUMENT SECURITY INDUSTRY GUIDELINES

April 15, 2025
 IGI Report No LG692547922
 BOUND MIXED CITE

2.14 CARATS	2.14 CARATS
FANCY INTENSE BLUE	FANCY INTENSE BLUE
VVS 2	VVS 2
56.9%	56.9%
59%	59%
Slightly Thick (faceted)	Slightly Thick (faceted)
Pointed	Pointed
EXCELLENT	EXCELLENT
EXCELLENT	EXCELLENT
NONE	NONE
Fluorescence	Fluorescence

Comments:
This Laboratory Grown Diamond was created by Chemical Vapor Deposition (CVD) growth process.