



ELECTRONIC COPY

LG692552962
Report verification at igi.org



April 2, 2025
IGI Report Number LG692552962
Description LABORATORY GROWN DIAMOND
Shape and Cutting Style ROUND BRILLIANT
Measurements 8.87 - 8.90 X 5.33 MM
GRADING RESULTS
Carat Weight 2.55 CARATS
Color Grade FANCY INTENSE PINK
Clarity Grade VS 2
Cut Grade EXCELLENT

April 2, 2025
IGI Report Number LG692552962
Description LABORATORY GROWN DIAMOND
Shape and Cutting Style ROUND BRILLIANT
Measurements 8.87 - 8.90 X 5.33 MM

GRADING RESULTS

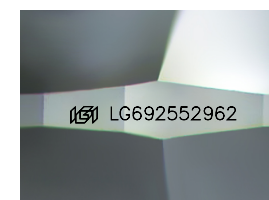
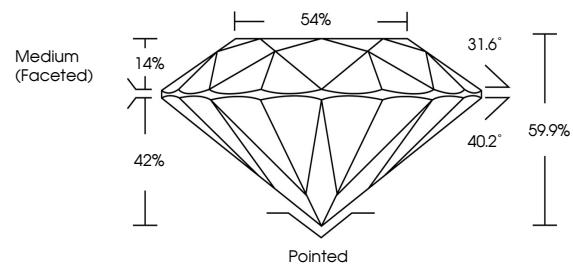
Carat Weight 2.55 CARATS
Color Grade FANCY INTENSE PINK
Clarity Grade VS 2
Cut Grade EXCELLENT

ADDITIONAL GRADING INFORMATION

Polish EXCELLENT
Symmetry EXCELLENT
Fluorescence SLIGHT
Inscription(s) IGI LG692552962

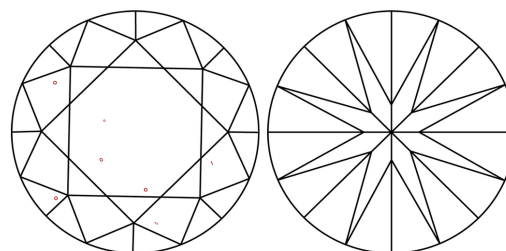
Comments: This Laboratory Grown Diamond was created by Chemical Vapor Deposition (CVD) growth process.
Indications of post-growth treatment.

PROPORTIONS



Sample Image Used

CLARITY CHARACTERISTICS



KEY TO SYMBOLS

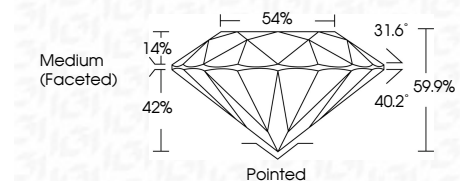
Red symbols indicate internal characteristics.
Green symbols indicate external characteristics.

COLOR

D E F G H I J Faint Very Light Light

CLARITY

IF WS 1-2 VS 1-2 SI 1-2 I 1-3
Internally Flawless Very Very Slightly Included Very Slightly Included Slightly Included Included



ADDITIONAL GRADING INFORMATION

Polish EXCELLENT
Symmetry EXCELLENT
Fluorescence SLIGHT
Inscription(s) IGI LG692552962
Comments: This Laboratory Grown Diamond was created by Chemical Vapor Deposition (CVD) growth process.
Indications of post-growth treatment.



April 2, 2025
IGI Report No LG692552962
ROUND BRILLIANT
8.87 - 8.90 X 5.33 MM
2.55 CARATS
FANCY INTENSE PINK
VS 2
EXCELLENT
59.9%
54%
Medium (Faceted)
Pointed
EXCELLENT
EXCELLENT
SLIGHT
IGI LG692552962
Comments: This Laboratory Grown Diamond was created by Chemical Vapor Deposition (CVD) growth process.
Indications of post-growth treatment.