



ELECTRONIC COPY

LG692555452
Report verification at igi.org



April 15, 2025
IGI Report Number LG692555452
Description LABORATORY GROWN DIAMOND
Shape and Cutting Style ROUND BRILLIANT
Measurements 8.01 - 8.06 X 4.80 MM
GRADING RESULTS
Carat Weight 1.92 CARAT
Color Grade FANCY INTENSE PINK
Clarity Grade VVS 2
Cut Grade EXCELLENT

April 15, 2025
IGI Report Number LG692555452
Description LABORATORY GROWN DIAMOND
Shape and Cutting Style ROUND BRILLIANT
Measurements 8.01 - 8.06 X 4.80 MM

GRADING RESULTS

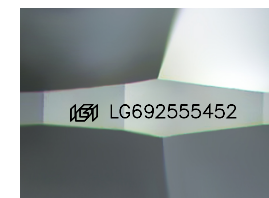
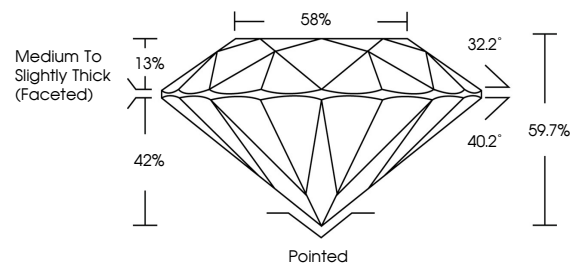
Carat Weight 1.92 CARAT
Color Grade FANCY INTENSE PINK
Clarity Grade VVS 2
Cut Grade EXCELLENT

ADDITIONAL GRADING INFORMATION

Polish EXCELLENT
Symmetry EXCELLENT
Fluorescence SLIGHT
Inscription(s) IGI LG692555452

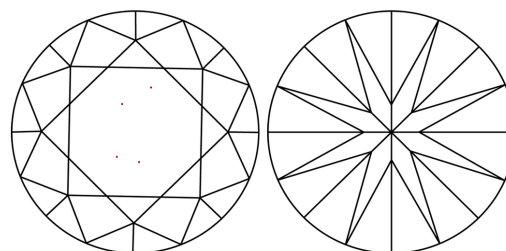
Comments: This Laboratory Grown Diamond was created by Chemical Vapor Deposition (CVD) growth process.
Indications of post-growth treatment.

PROPORTIONS



Sample Image Used

CLARITY CHARACTERISTICS



KEY TO SYMBOLS

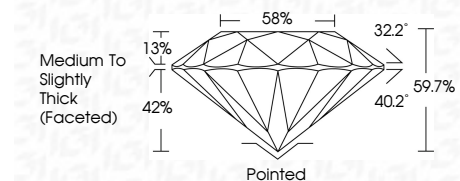
Red symbols indicate internal characteristics.
Green symbols indicate external characteristics.

COLOR

D E F G H I J Faint Very Light Light

CLARITY

IF VVS 1-2 VS 1-2 SI 1-2 I 1-3
Internally Flawless Very Very Slightly Included Very Slightly Included Slightly Included Included



ADDITIONAL GRADING INFORMATION

Polish EXCELLENT
Symmetry EXCELLENT
Fluorescence SLIGHT
Inscription(s) IGI LG692555452
Comments: This Laboratory Grown Diamond was created by Chemical Vapor Deposition (CVD) growth process.
Indications of post-growth treatment.



April 15, 2025
IGI Report No LG692555452
ROUND BRILLIANT
8.01 - 8.06 X 4.80 MM
1.92 CARAT
FANCY INTENSE PINK
VVS 2
EXCELLENT
59.7%
58%
Medium To Slightly Thick (Faceted)
Pointed
EXCELLENT
EXCELLENT
SLIGHT
EXCELLENT
IGI LG692555452
Comments: This Laboratory Grown Diamond was created by Chemical Vapor Deposition (CVD) growth process.
Indications of post-growth treatment.