



ELECTRONIC COPY

LG692563003
Report verification at igi.org



April 26, 2025

IGI Report Number **LG692563003**

Description **LABORATORY GROWN DIAMOND**

Shape and Cutting Style **CUT CORNERED
RECTANGULAR MODIFIED
BRILLIANT**

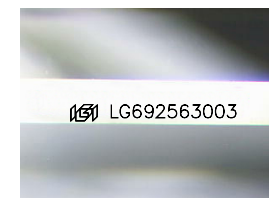
Measurements **7.85 X 5.74 X 3.93 MM**

GRADING RESULTS

Carat Weight **1.53 CARAT**

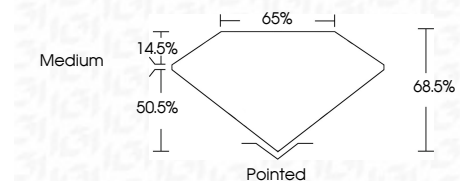
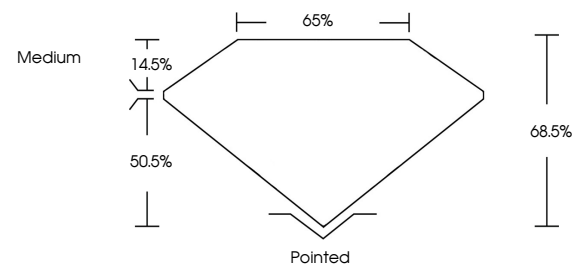
Color Grade **E**

Clarity Grade **VVS 2**

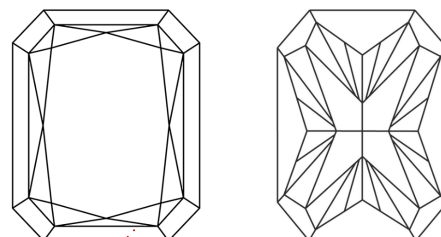


Sample Image Used

PROPORTIONS



CLARITY CHARACTERISTICS



KEY TO SYMBOLS

Red symbols indicate internal characteristics.
Green symbols indicate external characteristics.

COLOR

D E F G H I J Faint Very Light Light

CLARITY

IF WS¹⁻² VS¹⁻² SI¹⁻² I¹⁻³

Internally Flawless Very Very Slightly Included Very Slightly Included Slightly Included Included

ADDITIONAL GRADING INFORMATION

Polish **EXCELLENT**

Symmetry **EXCELLENT**

Fluorescence **NONE**

Inscription(s) **IGI LG692563003**

Comments: As Grown - No indication of post-growth treatment.

This Laboratory Grown Diamond was created by High Pressure High Temperature (HPHT) growth process. Type II



IGI

April 26, 2025
IGI Report No. LG692563003
CUT CORNERED RECT. MODIFIED BRILLIANT
7.85 X 5.74 X 3.93 MM
1.53 CARAT
E
VVS 2
68.5%
50.5%
Medium
Pointed
EXCELLENT
EXCELLENT
NONE
IGI LG692563003

Comments: As Grown - No indication of post-growth treatment.
This Laboratory Grown Diamond was created by High Pressure High Temperature (HPHT) growth process. Type II