



**ELECTRONIC COPY**

## LABORATORY GROWN DIAMOND REPORT

May 6, 2025	
IGI Report Number	LG692568619
Description	LABORATORY GROWN DIAMOND
Shape and Cutting Style	PRINCESS CUT
Measurements	5.43 X 5.41 X 3.69 MM

## GRADING RESULTS

Carat Weight	1.01 CARAT
Color Grade	D
Clarity Grade	VVS 2

### ADDITIONAL GRADING INFORMATION

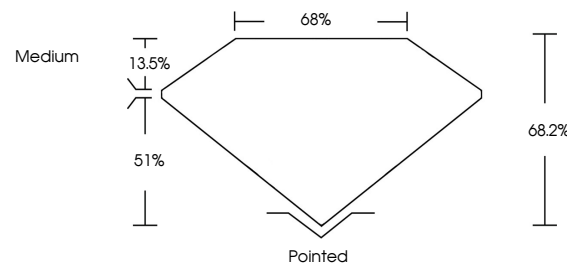
Polish	EXCELLENT
Symmetry	EXCELLENT
Fluorescence	NONE
Inscription(s)	 LG692568619

Comments: As Grown - No indication of post-growth treatment.

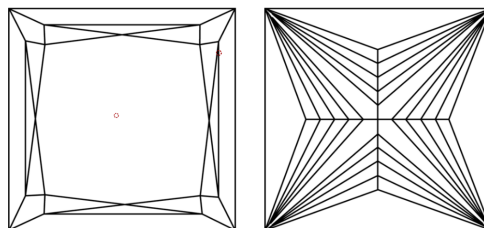
This Laboratory Grown Diamond was created by High Pressure High Temperature (HPHT) growth process.  
Type II

LG692568619  
Report verification at [igi.org](https://igi.org)

## PROPORTIONS

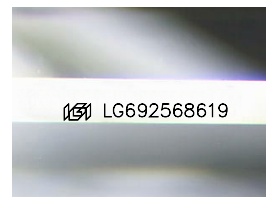


## CLARITY CHARACTERISTICS



## KEY TO SYMBOLS

Red symbols indicate internal characteristics.  
Green symbols indicate external characteristics.



Sample Image Used

**COLOR**

D E F G H I J Faint Very Light Light

## CLARITY

IF	VS <sup>1-2</sup>	VS <sup>1-2</sup>	SI <sup>1-2</sup>	I <sup>1-3</sup>
Internally Flawless	Very Very Slightly Included	Very Slightly Included	Slightly Included	Included

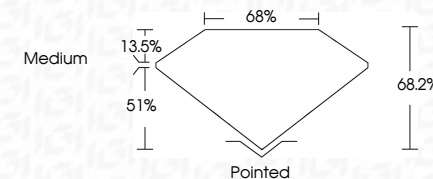
## LABORATORY GROWN DIAMOND REPORT



May 6, 2025	
IGI Report Number	LG692568619
Description	LABORATORY GROWN DIAMOND
Shape and Cutting Style	PRINCESS CUT
Measurements	5.43 X 5.41 X 3.69 MM

## GRADING RESULTS

Carat Weight	1.01 CARAT
Color Grade	D
Clarity Grade	VVS 2



### ADDITIONAL GRADING INFORMATION

Polish	EXCELLENT
Symmetry	EXCELLENT
Fluorescence	NONE
Inscription(s)	 LG69256619
Comments: As Grown - No indication of post-growth treatment.	
This Laboratory Grown Diamond was created by High Pressure High Temperature (HPHT) growth process.	
Type II	



© IGI 2020, International Gemological Institute

FD - 10 20



THIS DOCUMENT WAS PRODUCED WITH THE FOLLOWING SECURITY MEASURES: SPECIAL DOCUMENT PAPER, INK SCREENS, WATERMARK, BACKGROUND DESIGNS, HOLOGRAM AND OTHER SECURITY FEATURES NOT LISTED AND DO EXCEED DOCUMENT SECURITY INDUSTRY GUIDELINES

**www.igi.org**

May 6, 2025  
GI Report No LG692568619

<b>GL Report No</b>	<b>LG69256619</b>
<b>PRINCESS CUT</b>	
<b>Carat Weight</b>	<b>5.45 X 5.41 X 3.69 MM</b>
<b>Color Grade</b>	<b>D</b>
<b>Clarity Grade</b>	<b>VVS 2</b>
<b>Depth</b>	<b>68.2%</b>
<b>Table</b>	<b>68%</b>
<b>Girdle</b>	<b>Medium</b>
<b>Culet</b>	<b>Pointed</b>
<b>Polish</b>	<b>EXCELLENT</b>
<b>Symmetry</b>	<b>EXCELLENT</b>
<b>Fluorescence</b>	<b>NONE</b>

**Comments:**  
As Grown - No indication of post-growth treatment.