



**ELECTRONIC COPY**

## LABORATORY GROWN DIAMOND REPORT

March 26, 2025	
IGI Report Number	LG692592753
Description	LABORATORY GROWN DIAMOND
Shape and Cutting Style	EMERALD CUT
Measurements	10.08 X 6.73 X 4.55 MM

## GRADING RESULTS

Carat Weight	3.03 CARATS
Color Grade	E
Clarity Grade	INTERNALLY FLAWLESS

### ADDITIONAL GRADING INFORMATION

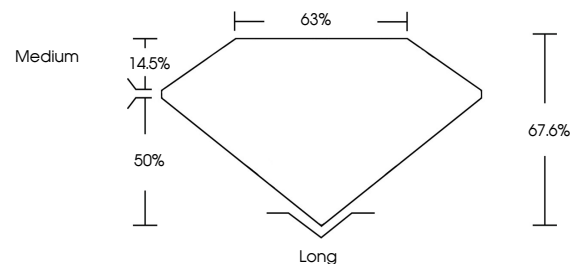
Polish	EXCELLENT
Symmetry	EXCELLENT
Fluorescence	NONE
Inscription(s)	151 LG692592753

Comments: As Grown - No indication of post-growth treatment.

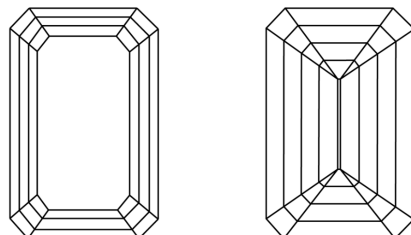
This Laboratory Grown Diamond was created by High Pressure High Temperature (HPHT) growth process.  
Type II

LG692592753  
Report verification at [iqi.org](https://iqi.org)

## PROPORTIONS

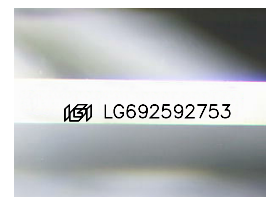


## CLARITY CHARACTERISTICS



### KEY TO SYMBOLS

Red symbols indicate internal characteristics.  
Green symbols indicate external characteristics.



Sample Image Used

## COLOR

D E F G H I J Faint Very Light Light

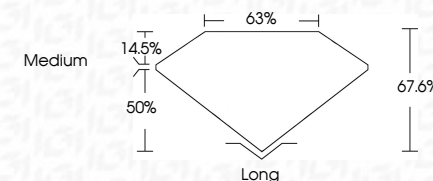
## CLARITY

IF	VS <sup>1-2</sup>	VS <sup>1-2</sup>	SI <sup>1-2</sup>	I <sup>1-3</sup>
Internally Flawless	Very Very Slightly Included	Very Slightly Included	Slightly Included	Included

## LABORATORY GROWN DIAMOND REPORT



March 26, 2025	
IGI Report Number	LG692592753
Description	LABORATORY GROWN DIAMOND
Shape and Cutting Style	EMERALD CUT
Measurements	10.08 X 6.73 X 4.55 MM
GRADING RESULTS	
Carat Weight	3.03 CARATS
Color Grade	E
Clarity Grade	INTERNALLY FLAWLESS



### ADDITIONAL GRADING INFORMATION

Polish	EXCELLENT
Symmetry	EXCELLENT
Fluorescence	NONE
Inscription(s)	<del>IGI</del> LG692592753
Comments: As Grown - No indication of post-growth treatment.	
This Laboratory Grown Diamond was created by High Pressure High Temperature (HPHT) growth process.	
Type II	



© IGI 2020, International Gemological Institute

FD - 10 20



THIS DOCUMENT WAS PRODUCED WITH THE FOLLOWING SECURITY MEASURES: SPECIAL DOCUMENT PAPER, INK SCREENS, WATERMARK, BACKGROUND DESIGNS, HOLOGRAM AND OTHER SECURITY FEATURES NOT LISTED AND DO EXCEED DOCUMENT SECURITY INDUSTRY GUIDELINE

**www.igi.org**

March 26, 2025  
GI Report No LG692592753

GI Report No. ICG49592763	3.03 CARATS
HEXAPOD CUT	
10.00 X 6.73 X 4.55 MM	
Carat Weight	
Color Grade	E
Clarity Grade	IF
Depth	57.6%
Table	65%
Grade	Medium
Culet	Long
Polish	EXCELLENT
Symmetry	EXCELLENT
Fluorescence	NONE
Comments	see Comments

**Comments:**  
As Grown - No indication of post-growth treatment  
This Laboratory Grown Diamond was created by High Pressure High temperature (HPHT) growth process.