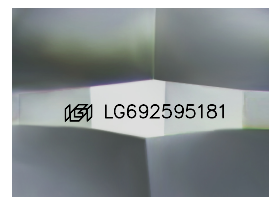
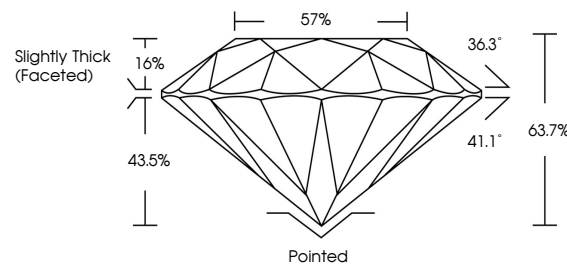


**ELECTRONIC COPY**

## LABORATORY GROWN DIAMOND REPORT

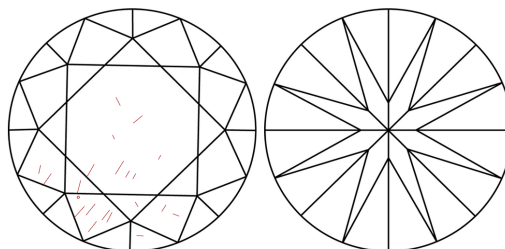
LG692595181  
Report verification at [lgi.org](https://lgi.org)

## PROPORTIONS



Sample Image Used

## CLARITY CHARACTERISTICS



## KEY TO SYMBOLS

Red symbols indicate internal characteristics.  
Green symbols indicate external characteristics.

## COLOR

D E F G H I J Faint Very Light Light

## CLARITY

IF WS<sup>1-2</sup> VS<sup>1-2</sup> S<sup>1-2</sup> |<sup>1-3</sup>

Internally Flawless	Very Very Slightly Included	Very Slightly Included	Slightly Included	Included
------------------------	--------------------------------	---------------------------	----------------------	----------



© IGI 2020, International Gemological Institute

FD - 10 20

**www.igi.org**

## LABORATORY GROWN DIAMOND REPORT



March 26, 2025

IGI Report Number **LG692595181**Description **LABORATORY GROWN DIAMOND**Shape and Cutting Style **ROUND BRILLIANT**

Measurements 7.68 - 7.74 X 4.91 MM

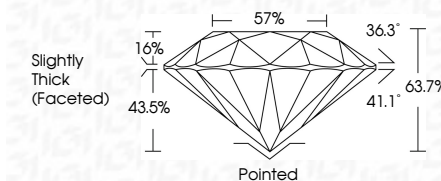
## GRADING RESULTS

Carat Weight 1.83 CARAT

Color Grade

Clarity Grade VS 2

Cut Grade **EXCELLENT**



### ADDITIONAL GRADING INFORMATION

Polish **EXCELLENT**Symmetry **EXCELLENT**Fluorescence **NONE**Inscription(s)  LG692595181

Comments: As Grown - No indication of post-growth treatment.

This Laboratory Grown Diamond was created by High Pressure High Temperature (HPHT) growth process.

Type II



<b>March 26, 2025</b>	<b>G Report No L692595181</b>	<b>VS 2</b>	<b>E</b>	<b>1.83 CARAT</b>
<b>ROUND BRILLIANT</b>	<b>Color Grade</b>	<b>Clarity Grade</b>	<b>Cut Weight</b>	
<b>68 - 774 X 491 MM</b>	<b>Depth</b>	<b>Cur Grade</b>	<b>VS 2</b>	
	<b>Table</b>	<b>Slightly Thick (FaceUp)</b>	<b>EXCELLENT</b>	
	<b>Grade</b>		<b>63.7%</b>	
			<b>57%</b>	
	<b>Culet</b>	<b>Poished</b>		
	<b>Polish</b>	<b>EXCELLENT</b>		
	<b>Symmetry</b>	<b>EXCELLENT</b>		
	<b>Fluorescence</b>	<b>NONE</b>		
	<b>Inscriptions(s)</b>			<b>L692595181</b>

**Comments:** As Grown - No indication of post-growth treatment.  
This Laboratory Grown Diamond was created by High Pressure High Temperature (HPHT) growth process.