

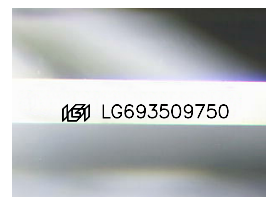
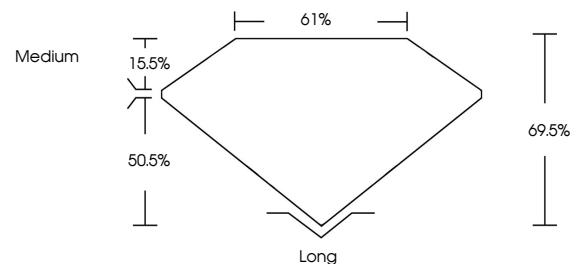


ELECTRONIC COPY

LABORATORY GROWN DIAMOND REPORT

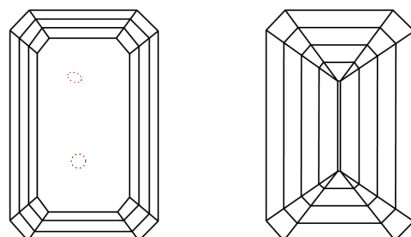
LG693509750
Report verification at lgi.org

PROPORTIONS



Sample Image Used

CLARITY CHARACTERISTICS



KEY TO SYMBOLS

Red symbols indicate internal characteristics.
Green symbols indicate external characteristics.

COLOR

D E F G H I J Faint Very Light Light

CLARITY

IF VWS¹⁻² VS¹⁻² SI¹⁻² I¹⁻³

Internally Flawless	Very Very Slightly Included	Very Slightly Included	Slightly Included	Included
------------------------	--------------------------------	---------------------------	----------------------	----------

LABORATORY GROWN DIAMOND REPORT



March 21, 2025

IGI Report Number **LG693509750**

Description	LABORATORY GROWN DIAMOND
-------------	--------------------------

Shape and Cutting Style **EMERALD CUT**

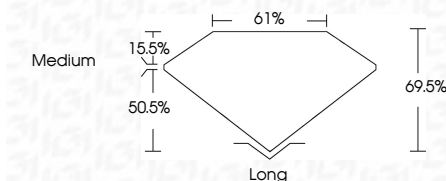
Measurements **6.55 X 4.85 X 3.37 MM**

GRADING RESULTS

Carat Weight 1.03 CARAT

Color Grade E

Clarity Grade SI 1



ADDITIONAL GRADING INFORMATION

Polish **EXCELLENT**Symmetry **EXCELLENT**Fluorescence **NONE**Inscription(s) LG693509750

Comments: This Laboratory Grown Diamond was created by Chemical Vapor Deposition (CVD) growth process.
Type IIa



www.igi.org

© IGI 2020, International Gemological Institute

FD - 10 20



THIS DOCUMENT WAS PRODUCED WITH THE FOLLOWING SECURITY MEASURES: SPECIAL DOCUMENT PAPER, INK SCREENS, WATERMARK, BACKGROUND DESIGNS, HOLOGRAM AND OTHER SECURITY FEATURES NOT LISTED AND DO EXCEED DOCUMENT SECURITY INDUSTRY GUIDELINES

March 21, 2025
GJ Report No. 16693509750

<p> GI Report No. LG69309760 CLERAUD CUT 5.65 X 4.85 X 3.37 MM </p>	<p> 1.03 CARAT E </p>	<p> SI 1 69.5% 61% Medium </p>	<p> Long EXCELLENT EXCELLENT NONE Very Good </p>
--	--	---	---

Comments:
This Laboratory Grown Diamond was created by Chemical Vapor Deposition (CVD) growth process.