



ELECTRONIC COPY

LG693510709
Report verification at igi.org



April 10, 2025
IGI Report Number **LG693510709**
Description **LABORATORY GROWN DIAMOND**
Shape and Cutting Style **SQUARE CUSHION MODIFIED BRILLIANT**
Measurements **6.31 X 6.28 X 4.16 MM**
GRADING RESULTS
Carat Weight **1.52 CARAT**
Color Grade **FANCY VIVID BLUE**
Clarity Grade **VVS 1**

LABORATORY GROWN DIAMOND REPORT

April 10, 2025
IGI Report Number **LG693510709**
Description **LABORATORY GROWN DIAMOND**
Shape and Cutting Style **SQUARE CUSHION MODIFIED BRILLIANT**
Measurements **6.31 X 6.28 X 4.16 MM**

GRADING RESULTS

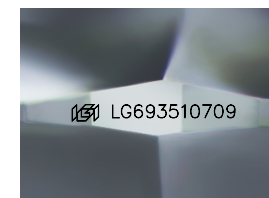
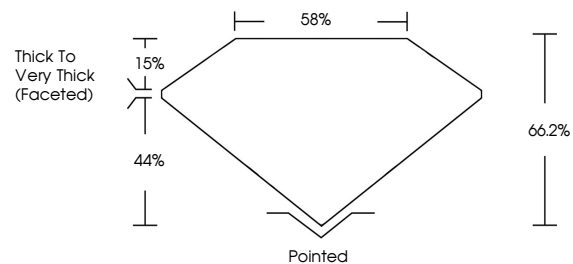
Carat Weight **1.52 CARAT**
Color Grade **FANCY VIVID BLUE**
Clarity Grade **VVS 1**

ADDITIONAL GRADING INFORMATION

Polish **EXCELLENT**
Symmetry **EXCELLENT**
Fluorescence **NONE**
Inscription(s) **IGI LG693510709**

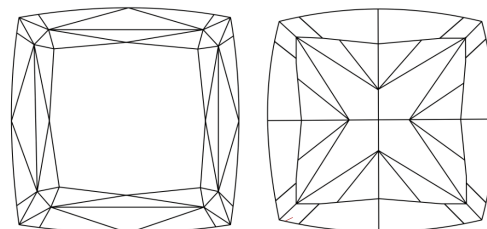
Comments: This Laboratory Grown Diamond was created by Chemical Vapor Deposition (CVD) growth process.
Indications of post-growth treatment.

PROPORTIONS



Sample Image Used

CLARITY CHARACTERISTICS



KEY TO SYMBOLS

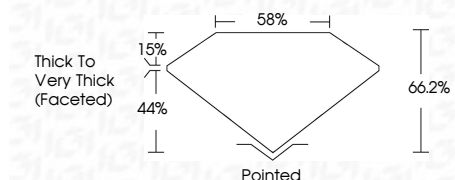
Red symbols indicate internal characteristics.
Green symbols indicate external characteristics.

COLOR

D E F G H I J Faint Very Light Light

CLARITY

IF	VS ¹⁻²	VS ¹⁻²	SI ¹⁻²	I ¹⁻³
Internally Flawless	Very Very Slightly Included	Very Slightly Included	Slightly Included	Included



ADDITIONAL GRADING INFORMATION

Polish **EXCELLENT**
Symmetry **EXCELLENT**
Fluorescence **NONE**
Inscription(s) **IGI LG693510709**
Comments: This Laboratory Grown Diamond was created by Chemical Vapor Deposition (CVD) growth process.
Indications of post-growth treatment.



IGI



April 10, 2025
IGI Report No **LG693510709**
SQUARE CUSHION MODIFIED BRILLIANT
6.31 X 6.28 X 4.16 MM
Carat Weight **1.52 CARAT**
Color Grade **FANCY VIVID BLUE**
Clarity Grade **VVS 1**
Depth **66.2%**
Table **58%**
Girdle **Thick to Very Thick (Faceted)**
Culet **Pointed**
Polish **EXCELLENT**
Symmetry **EXCELLENT**
Fluorescence **NONE**
Inscription(s) **IGI LG693510709**
Comments: This Laboratory Grown Diamond was created by Chemical Vapor Deposition (CVD) growth process.
Indications of post-growth treatment.